

SHAKER AUCTION 2019

Hancock Shaker Village
Pittsfield, MA



WILLIS HENRY

AUCTIONS^{LLC}

Pat Hatch Collection

I opened my antiques shop on the common in Harvard, Massachusetts in 1973. When I began I knew little about the Shakers or the things they made. But within a week my education began. A former promoter, dealer and then picker found my door open and the lasting wave of merchandise, including Shaker material, began. Ted Boucher who grew up living next door to the Canterbury Shakers had a golden touch and a practiced eye. Each time he appeared he showed me all kinds of things for my shop. But every time he said an item was Shaker I was drawn to it more than everything else. The more he brought to me the greater my appreciation for Shaker goods became. It was a time of general lack of information about the Shakers, and informed customers were hard to find. Willis and Karel Henry helped to build our awareness and appreciation of the American art form, so it makes me happy they are going to sell the last holdings of my 46 years of collecting.

Pat Hatch

The Belfit Collection

Robert and Hazel Belfit started collecting Shaker pieces in 1924, and over the years purchased a number of pieces from Mt. Lebanon, New York and Hancock, Massachusetts, as well as Watervliet, New York, Canterbury, New Hampshire, and Sabbathday Lake, Maine.

Ted Andrews was a friend of theirs and started collecting Shaker furniture on the advice of the Belfit's. The book *Hands to Work, Hearts to God* by Klamkin illustrates a number of pieces from the Belfit collection.

We are honored to have three pieces from this prestigious collection, including lot 27, the comb rack, lot 157, the candle sconce, and the tripod work table, lot 134. According to Belfit, the butternut comb rack was once described by an antique cabinetmaker who said "It is a privilege just to hold it."

These pieces have never before been offered for sale and have been in the Belfit Family passed down three generations.

Estate of Robert R. Sokol, Sr.

Robert's Great Grandfather, Peter Cybulski, purchased the South Family Shaker Farm from Walter Shepard and Caroline Tate, who were the Farm Trustees of the Shaker Society of Enfield, Connecticut on January 14, 1913. The property was inherited by Robert's Grandfather, Steven Cybulski. Steven's eldest son, Zigmund, ran the farm until the late 1970's. Steven's eldest daughter was Sadie, Robert's mother.

Robert spent his early years of the 1940's and 1950's living at the Shaker farm in the summer months and weekends while in school, helping with the farming duties which included growing tobacco in the early years and potatoes in the later years. The properties of the Church and North Families were adjacent to the Cybulski farm. The Connecticut State Department of Corrections purchased that land to build their new prison. Robert worked at the prison for 20+ years. Richard Steinert also worked there during that time as Deputy Warden and then Warden.

Robert and our mother Rose became members of the Enfield Historical Society in the early 1970's and helped establish the Enfield Historical Society Museum. Richard Steinert, recognizing the importance of preserving the Shaker heritage arranged for many Shaker items that would have been discarded by the prison to be permanently loaned to the Enfield Historical Society Museum. It was through this loan that Robert and Richard developed a lasting relationship that would lead to Robert purchasing from Richard many of the items in this auction.

Robert Sokol, Jr.

James S. Brown Collection

Mr. Brown worked with the remaining Shakers at Hancock, Massachusetts in the 1940's and 50's, and taped many chairs for them, and other Shaker collectors such as the McCue family. He became an expert authority on Shaker Furniture collecting many pieces during those years. Most of the pieces from his collection were purchased directly from the Shakers themselves, either at Mt. Lebanon, New York or Hancock. The miniature Shaker Furniture was purchased by his daughter, Mrs. E. Wilson, formerly of Ludlow, Massachusetts from Mrs. Alice Schwerdtfeger of Poland Spring, Maine in 1979. The Wilson/Schwerdtfeger correspondence will accompany the miniature lot.

WILLIS HENRY
AUCTIONS

SHAKER AUCTION 2019

Saturday, July 13, 2019 at 12:00 pm

Preview: Thurs., July 11 - 1-5; Fri., July 12 - 10-5; Sat., July 13 - 10-11:30

Hancock Shaker Village, Pittsfield, MA



lot 121

**Directions: from Mass. Turnpike I-90 Westbound,
Exit 1, Rt. 41 N to end, 9 miles, left on Rt. 20 West, 1/2 mile**

www.willishenry.com

781-834-7774

wha@willishenry.com

Antiques and Estates appraised, purchased or sold on consignment
22 Main Street, Marshfield, Massachusetts 02050, 781-834-7774, Fax 781-826-3520



1

SISTER'S SPIT BOX

Maple and pine, original yellow painted finish, copper nailed reinforced rim, three fingers, Mt. Lebanon, NY, c. 1830-1840, 3 1/4" h, 7 3/8" dia.

2

LIDDED PAIL

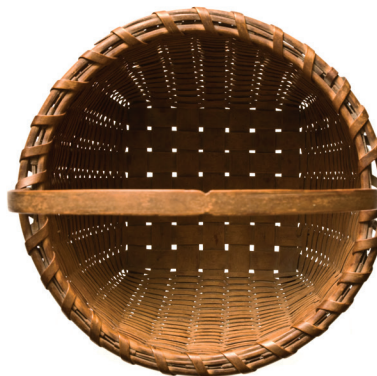
Pine, original mustard yellow painted finish, birch handled wire bail with original red stain, Canterbury, NH, c. 1840, pinpricked script on bottom "Infirmery, North Family", 10 1/2" h to top of handle, 9" dia, (Stranahan collection; ex. WHA 5/29/11).



3

GATHERING BASKET

Black ash, very fine patina on handle and rim, single wrapped round rim, squared bottom, finely shaped hoop handle, with small carved notches at top possibly for hanging with twine, c. 1840-1850, excellent condition, 6 3/4" h to rim, 12 1/2" h to top of handle, 9" dia, (Stranahan collection; ex. WHA 5/29/11).



4

WORK BASKET

Black ash, single carved hoop handle, finely shaped double wrapped rim, inverted base, overall excellent condition, c. 1850, 14" h to top of hoop handle, 14 1/2" dia.



5

WORK BOX

Pine and poplar, original brown stained varnish finish, chamfered sliding lid with small brass pull, fitted to slot in top edge of box, early repairs on side of lid, finely dovetailed case, interior till, ink signed "Meeting House Johnson", symmetrically wooden pegged bottom board, c. 1840-1850, 9 1/4" h, 17 1/2" l, 10 1/4" w.



6

SISTER'S OFFICE DESK

Pine, original dark stained walnut finish, slant hinged lid with raised catch for pens, dovetailed case, opening to a compartment with four finely dovetailed drawers and a bottom lift lid compartment, all on a stepback skirted base, on very fine and delicately tapered square legs, mortise and double pinned construction, interior drawers with writing on side, and numbers and figures on bottom, 33" h, 20" w, 18" d.





7

LIDDED PAIL

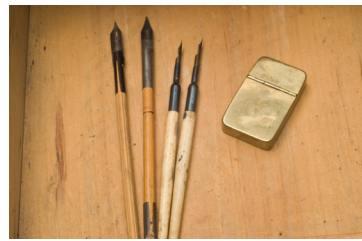
Pine, original ochre/orange stained finish, three steel wrapped bands, wire bail with birch handle and steel diamond bail plates, decorated on lid in green painted circle "Elsie A. Bell", and two hand-painted red and blue roses on either side, original white painted interior, stamped on bottom "N.F. Shakers, Enfield, NH", 8" h, 9 3/4" dia.



8

DESK BOX

Pine, varnish finish, slanted breadboard lid, brass hinges, shaped gallery edged top, found with four wooden pens fitted with steel nibs and a small brass case, 4 1/4" h, 9 5/8" w, 11 1/4" d.



9

STORAGE CHEST

Pine, original red painted finish, whitewashed interior (to reflect light in order to better see inside), six-board construction, brass diamond shaped escutcheon plate, cast iron side handles, half-round molding at base, original key with tag "Hardware Miscellany", New Lebanon, NY, c. 1840-1850, 13" h, 19 1/2" w, 13 1/4" d, sold WHA in two former auctions; (Stranahan collection; ex. WHA 5/29/11).



10

DOUBLE LIDDED CARRIER

Pine, original varnish finish, carved and shaped hoop handle attached with brass screws, double lid, each with inset brass hinges, both finely breadboarded on end, rectangular form, sides and bottom secured with small hand-cut tin brackets, each with two round head steel tacks, red and white paper label on bottom, blue ink "Bought from Sister Rosetta Stevens, Mt. Lebanon, North Family, 1929", and a small white sticker "Shaker Box #15, Lunch Box", (Note: the cut tin brackets are a unique way of joining the wood parts), 10 1/2" h to top of handle, 5 1/4" to top of box, 15 1/4" l, 11 1/4" d, (Stranahan collection; ex. WHA 5/29/11).



11

KINDLING BOX

Poplar, oak with maple handle, original varnish finish, rectangular form, secured with "L" shaped steel brackets, signed in pencil script next to the handle "Brethren Lewis...2 N House", New Lebanon, NY, c. 1840, pictured in *Inspired Innovation*, Steve Miller, p. 179, 17 1/2" h to top of handle, 18" l, 11 1/2" w, (sold WHA, Kingston, MA, 1983).

12

THREE OVAL BOXES

Original natural finish, three fingers, 2" h, 5 1/8" l; Four fingers, (originally purchased from Richard and Betty Ann Rasso), 3 1/2" h, 8 1/2" l; Four fingers, (originally purchased from George and Debbie Spiecker), 4 1/2" h, 10 1/8" l; all in fine condition, (Stranahan collection; ex. WHA 5/29/11).





13
SISTER'S KERCHIEFS

Six finely woven kerchiefs, four with Sister's initials "EC", "JD", "KL" and "LM", (ex. Pat Hatch collection).



14
PAIL

Original yellow painted finish, overpaints professionally removed, extended wooden ears with oak carved swing handle, North Family, New Lebanon, NY, c. 1820-1830, minor insect damage to handle, two original cast steel strap/bands, 7 3/4" h to rim, 13 1/2" h to top of handle, 11" dia, (Stranahan collection; ex. WHA 5/29/11).

15
GATHERING OR LAUNDRY BASKET

Black ash, round top, with single wrap rim, carved side handles, square openweave bottom with three carved runners, excellent old patinated finish, polished handles, New Lebanon, NY, c. 1830-1840, 17" h to top of handle, 23 1/2" dia, (Stranahan collection; ex. WHA 5/29/11).



16
BENCH AND BOOTSCRAPE

Pine, original walnut stained finish, rounded on one end, bootjack cutout legs, c. 1860, (sold WHA, 1994, Lot 249; and 2011, Lot 187), 10" h, 36" l; Bootscrape, hand-forged iron, angled feet with screw holes for mounting, (D. Buck Auction, 1991, Lot 45), 7 1/2" h, 11 1/4" w.

17

EARLY WORK COUNTER

Butternut, pine and poplar, original red stained finish, two board breadboard top, secured to the base with rosehead nails, exceptional overhang, single board pine sides, with high arched base, three full-length dovetailed and lipped drawers, original turned hardwood pulls, dovetailed frontice board at the base, New Lebanon, NY, c. 1830, 32" h, 26 1/4" w to 65 1/4" l (top), 41 1/2" l (case).



18

TWO BUTTER CHURNS

Pine, original red, and original yellow, both with interlocking wood laps, yellow one is missing its dasher and lid, red one has original lid and dasher, small piece missing at rim, original piggen handle, c. 1820-1840, 23" and 21" h, (ex. WHA 5/29/11).



19

THREE MEASURES

Maple, birch and pine, original natural finish, large measure/ carrier with swing handle, finely nailed bentwood construction, 9", 6" and 4 1/2" dia, (Stranahan collection; ex. WHA 5/29/11).



20

LIDDED PAIL

Pine, original bittersweet red stained finish, wire bail with birch handle, diamond bail plates, three steel wrapped bands (one on lid), stamped on bottom "NF Shakers, Enfield, NH", 9 3/4" h, 12" dia.



21

COUNTER

Butternut and pine, original brown and yellow stained finish, two board butternut top, with connecting spline over two inset butternut panel doors, pine frames and pine sides, door with brass and porcelain sliding catches, two shelf yellow stained interior, canted feet, South Family, New Lebanon, NY, c. 1840-1850, (note: top left side was cut by the Shakers and corner was rounded to accommodate a doorway), 28" h, 51 1/2" w, 23" d, (ex. Count Family collection).



22
TWO BASKETS

Rectangular hoop handle basket, single wrap rim, finely carved handle, 4 1/4" h (to rim), 7" h (to top of handle), 13" l; Large round basket, single wrap rim, carved side handles, 11" h, 23" dia.



23
TABLE TOP DESK
Cherry, natural varnish finish, canted front pull-down writing surface, framed construction, white porcelain pull, interior storage compartments and cubbyholes, Mt. Lebanon, NY, c. 1890, 24" h, 31" l, 11 1/2" d, (Stranahan collection; ex. WHA 5/29/11).



24
STEP STOOL

Walnut, original varnish finish, classic arch design, shaped back legs, bottom step fitted into dadoed sides, 24 1/2" h, 16 1/2" w, 18" d, (ex. WHA, 1994, Lot 204; WHA, 2011, Lot 18).





25

BLANKET BOX

Pine, original red painted finish, snipe hinged lid with molded front, beveled cleats under lid, symmetrically screwed, lock and lock plate, symmetrically nailed case, Harvard, MA, 25 1/2" h, 43" w, 16 1/2" d, (ex. Pat Hatch collection).

26

SISTER'S PORTABLE SEWING CHEST

Pine, original yellow paint with black painted moldings, carrying knob on top, molded tray top (to hold pins and needles), four symmetrically nailed and lipped drawers, with turned walnut pulls, black molded base, Watervliet, NY, c. 1870-1880, with folded 1954 paper history, "...made at the Carpenter's shop at the Church family of Shakers where the Albany Airport is now located. Eldress Mary Nelson of the Church Family presented it to her Sister..." ., 10 1/2" h, 8" w, 6" d.



27

RARE COMB RACK

Butternut, original varnish finish, exceptional carved backboard with hole for hanging, inset into a rectangular, finely dovetailed box with canted sides and front, thin stock bottom board symmetrically nailed to the open box, 9 1/2" h, 10" w, 3 3/4" d. [Pictured on p. 217, "American Communal Societies Quarterly", Vol. 10, No. 4, October 2016, From the Belfit Collection, "an exquisite illustration of perfect Shaker craftsmanship...The workmanship is so superb that an antique cabinetmaker said 'It is a privilege just to hold it'". Robert Belfit purchased the rack at Hancock from the Francis Hall House. He supposed that it was made "by one of the fine cabinet-makers in the Harvard Society" and brought to Hancock by Sister Martha Wetherill.]





28
PLUSH COVERED FOOTSTOOL
 Maple, original dark walnut stain, production decal on underside, "Shaker's Trademark, Mt. Lebanon, N.Y.", covered with red velvet pillow attached with eyescrews, Mt. Lebanon, NY, c. 1880, very fine condition, 8 1/2" h, 10 1/2" l, 12" w.

29
WORK BOX AND CLOTHES-PINS

Pine, original varnish finish, Shaker made turned maple handle, and wire loop front catch, very finely dovetailed, with 11 walnut and tin wrapped clothespins (5" l), c. 1860, 6" h, 12 1/4" w, 7" d.



30
TWO DOOR CUPBOARD
 Pine, natural finish, taken down from white paint, top door flush panel with molded sides, through mortised with triple pegs at top corner, and pegged diagonally at the bottom, smaller bottom door with diagonal pegs, dovetailed case, Enfield or Canterbury, NH, c. 1830-1840, 86" h, 29" w, 13 1/4" d, (ex. Pat Hatch collection).



31

TWO SMALL BASKETS

Black ash, rectangular hoop handle, some small breaks on one side, 5" h (to top of handle), 6 3/4" l, 5" w; Fancy goods square basket, finely woven, lidded, Sister's initials in pencil under lid "E.S.A.", and numbers on bottom in pencil, minor breaks and missing wrap on lid, good color patina,



32

THREE POPLAR SISTER'S BONNETS

Dark weavers, light weavers, and light and dark mixed, all paper labeled on inside with size numbers "6", "6", and "7", all in overall good condition.



33

TWO FANCY GOODS SEWING BOXES, AND TOMATO PINCUSHION

Maple and pine, with red and dark original finish, oval with swing handle, four fingers, red silk interior with poplar needle-case, tomato pincushion, strawberry emery, bees wax, 6" h (to top of handle); Round sewing box with swing handle, pink satin interior, fitted with bees wax, strawberry emery, felt needlecase, and tomato pincushion, 6" h (to top of handle); Light blue pincushion/spool holder, (missing two steel pins), original varnish finish, maple base, 6" h.



34

TWO SISTER'S SEWING STANDS

Pine, original lightly stained finish, beveled breadboard ends, finely turned small maple legs, tiny button feet, c. 1840-1850, good condition, 3" h, 15" l, 8 1/4" w; Cherry, original stained cherry red finish, turned shelf support and legs, c. 1850, small early repair at one leg, 9 1/4" h, 13" l, 6 1/2" w.



35

HANGING DAIRY SHELF

Pine, original brown/dark red stained finish, two shelves, vertical rounded side planks dovetailed into bottom shelf, holes at top for hanging, New Lebanon, NY, 29" h, 50" w, 11 1/2" d, (ex. Pat Hatch collection).



36

TEN SHAKER RUG WHIPS

Maple, bentwood fixed with metal holders, turned handles, paper labeled "Shaker Rug whip, Patented, Oct 25, 1898", 24 1/2" l, 7 1/2" w.



37

COLLECTION OF TOOLS AND WOODEN OBJECTS

Molding planes, two marked "OH" (Orren Haskins); spoke shave; Sister's wood mallet; awls; small file with finely turned handle, one marked "SC"; (14 pieces).



38

TWO OVAL BOXES

Rare small oval box, maple and pine, three fingers, original varnish finish, good condition, 1 1/4" h, 3 3/8" l; Four finger oval box, pine and maple, light red stained finish, excellent condition, 3 1/2" h, 8 3/4" l.





39
HANDLED CARRIER; AND WORK BOX
 Round measure reused with swing handle as a carrier, natural finish, 7" h, 11" dia; Rectangular pine Brother's work box, traces of yellow stained finish, dovetailed hinged lid with brass handle, two interior sections, stenciled under lid "F.N. Colman", 8" h, 25" l, 11" d.



40
TWO WORK BOXES AND RAZOR STROP
 Pine box, early light brown painted finish, dovetailed, latch and button lid closure, paper labeled inside "Alden Lyman", sectioned interior with threaded pegs (approximately 35), three Bennington drawer pulls, and a few threaded wood pulls, file and awl square head nails, 8" h, 15" l, 9" d; Shaped walnut and leather razor strop, tagged "Enfield, CT., Brother Lyman (Alden Lyman)", also remnants of a paper label on the walnut base, 12 1/2" l, 1 1/2" w; (ex. estate of Robert R. Sokol Sr. collection).



41
TWO "SHAKER SEEDS" BOXES
 Pine, original red painted finishes, one with leather hinges (detached), one with wire hinges, original paper labels on front, sectioned interiors, 3 1/2" h, 23 1/2" l, 11 1/4" d, (ex. Pat Hatch collection).



42
"GARDEN SEEDS" DISPLAY BOX
 Breadboard top, original red paint, stenciled in black on front "Enfield, NH", interior paper labels and sections, Shaker made cast iron latch set, "TEH" stenciled on left side, original leather hinges (detached), 3 3/4" h, 25" w, 11" d, (ex. Pat Hatch collection).



43

RARE SEED TRAY, BELLOWS AND FUNNEL

Pine, original dark finish, rectangular tray, with back section and canted front, 2" h, 12" l; along with a rare Shaker seed bellows with leather, 7 1/2" l; and an exceptional small turned wooden seed funnel, 2 1/2" h; (ex. estate of Robert R. Sokol Sr. collection).



44

APPLE DRYER

Pine, original red painted finish, inserted screen, dovetailed, applied molding at base, Enfield, CT, 4 1/4" h, 17" sq, (ex. estate of Robert R. Sokol Sr. collection).



45

WORK BENCH

Pine and maple, original light olive green painted finish, rectangular top, clipped corners, octagonal legs, splayed, tagged "North Family, Enfield CT", some minor wear to top, (note: reused from an oval bench attached to top with symmetrically lined screws), 20 1/2" h, 42" l, 12" d, (ex. estate of Robert R. Sokol Sr. collection).



46

APPLE SAUCE SIGN; AND LABELED PAIL

Cast steel sign with enamel "Shaker Apple Sauce..."; "D.C. Brainard, Mt. Lebanon, Col. Co. N.Y." in bright colors, made by Hinds Ketcham Co., New York and Connecticut, 7" x 11 1/4"; Pine lidded pail, with swing handle, labeled "Shaker Apple Sauce, from D.A. Parsons, Shirley, Mass."; (possibly missing bottom wrapping band), 7 1/2" h, 8 1/4" dia; (ex. Pat Hatch collection).



47

RARE PAIL

Pine, birch wraps, original finish, Shaker cast iron swing handle, one ear with Shaker leather repair, bottom shows a split, 10 1/2" h, 11" dia, (ex. Pat Hatch collection).



48

CLASSIC SHAKER DROP LEAF TABLE

Cherry, birch and pine, natural finish with original red stained base, wood pegged top, single drawer, dovetailed with molded lip, original turned cherry wood pull, thumbnail molded skirt, carved wood wing-shaped leaf supports with wooden hinges, finely turned birch legs, overall excellent condition, c. 1830, 26 3/4" h, 34" l, 13" w, 7 1/2" w (leaf), 4 3/4" (overhang front and back).



49

TWO BROTHER'S CANTEENS

Rare Brother's field canteen, pine, iron wraps, carved spout, footed, early rope handle, tagged "South Shakers Enfield, Ct.", c. 1850-1860, 11" dia; Brother's barrel shaped canteen, pine, original red painted finish, four wrapped iron bands, wood and iron swing handle, Enfield, CT, c. 1850-1860, 9" l, 6 1/4" dia base; (ex. estate of Robert R. Sokol Sr. collection).



50

NORTH FAMILY BELL

Cast iron, dated 1886, #1 yoke, "C.S. Bell & Co, Hillsboro, O.", tagged "North Family, Enfield, CT.", loaned to a local Enfield Museum by the Sokol Family, 13" h, 14" dia, (ex. estate of Robert R. Sokol Sr. collection).



51

**RARE SMALL SHELF RACK, AND
STRAWBERRY EMERY MOLD**

Pine, original red painted finish, six canted shelves, with half-round arched backboard, and central hole for hanging on peg, filled with collection of 50+ Shaker strawberry emeries, 11" h, 7 1/2" w; Two-piece walnut mold for ten 1" strawberry emeries, (note: this is a rare museum quality piece), 12" l; (ex. Pat Hatch collection).



52

**SISTER'S SPOOL RACKS AND
SPOOL BOXES**

Open pine box with six wood pegs for spools, stained walnut, 2" h, 5 1/4" sq; Turned spool holder with central turned handle, eight pegs, 4 1/4" h, 5" dia; Two turned maple lidded boxes, each with spool holder peg, and front hole for thread, red and yellow stain, 2" h, 2 1/2" dia; Pincushion clamp, with threaded securing handle, Enfield, CT, 6" h, (ex. estate of Robert R. Sokol Sr. collection).

53

SISTER'S SPOOL CADDY

Walnut, two swing arm spool holders, each with 12 front holes for threads, bottom drawer for sewing utensils, turned Shaker pull for top handle, tagged "Alfred, Maine", c. 1880, 7" h, 8 1/2" w, 4" d, (ex. estate of Robert R. Sokol Sr. collection).



54

STORAGE SEAT

Lidded pine box, covered in dyed blue cloth, hinged lid with hooked rectangular designed rug, horsehair filled, all on castors, Harvard, MA, c. 1870-1880, 15" h, 21" w, 15" d, (ex. Pat Hatch collection).



55

ADD-ON CUPBOARD

Poplar, original red/brown painted finish, dovetailed case, two inset panel doors, double pinned on the diagonal, one pull, two Shaker carved wooden door latches, 10 1/2" h, 34 1/2" l, 9" d, (ex. Pat Hatch collection).



56

STORAGE BOX

Pine, hinged top board in original red stain, covered in marbled paper, bottom paper is a hand bill "Yankee Notions...Elihu Geer Stationeers & Steam Printers, 1857, Thomsonville, CT.", 13 1/2" h, 15 1/2" l, 12" d, (ex. Pat Hatch collection).



57

PLUSH COVERED STOOL

Pine and maple, striped brown and cream plush cover, Mt. Lebanon Shaker's trademark decal on bottom, purchased at Willis Henry Auction Shaker Farm, John Roberts collection, 1990, 7 1/2" to 6 1/2" h, 12" sq, (ex. Pat Hatch collection).



58

CUTLERY BOX

Walnut and pine, original natural finish, double slide lids, thin stock, four partitioned interiors, dovetailed and canted box, symmetrically nailed baseboard (glued split), tagged "Church Family, Enfield, CT.", "S. Emily Copley To Sister Clarissa Stowe to Richard Steinert" To the Sokol Family collection, 3 1/4" h, 14 1/2" l, 12" w, (ex. estate of Robert R. Sokol Sr. collection).



59

DONATION BOX

Walnut, original natural finish, slide lid, very thin stock, dovetailed box, carved backboard with extended handle, tagged "Church Family, Donation Box for Public having a "No Cost" dinner at Shaker Station, Enfield, CT."; initialed on bottom in pencil "JHK" or "THK", (note: an exceptional Shaker box with history), 9 3/4" l, (ex. estate of Robert R. Sokol Sr. collection).



60

EARLY HANGING CUPBOARD

Pine, original blue painted finish, single door of two vertical inset panels, through mortised and pegged, original Shaker turned pull, four-shelf with split top shelf, partially painted on left side, shows two stains on right, Harvard, MA, (note: Fiske Warren purchased the Shaker Community at Harvard in 1918, he kept this cupboard and it went to Fruitlands; Charly Perkins, caretaker at Fruitlands sold it to Nancy Joslin who sold it to Pat), 40" h, 28 1/2" w, 11" d, (ex. Pat Hatch collection).





61
DOUGH BOARD
 Pine, raised side and back, dovetailed, arched top with hole for hanging on peg, Enfield, CT, 3 1/2" h (at sides), 36" l, 19" w; and eight cast steel dough scrapers, tagged "Enfield Shakers", 3" h, 4" l, (ex. estate of Robert R. Sokol Sr. collection).

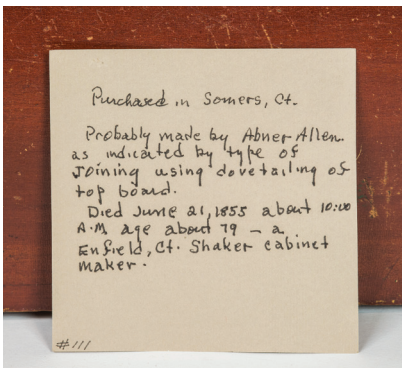


62
FOUR SISTER'S HANGERS
 Curved maple, light and dark varnish, two are stamped "A.A.C.", and one is labeled "Maria Lyman", three with leather loops for hanging, one with black silk ribbon hanger, Enfield, CT, 10" to 13" l, (ex. estate of Robert R. Sokol Sr. collection).



63
STORAGE BOX
 Cherry and poplar, original red stained finish, hinged lid with applied side cleats, shaped and beveled, finely dovetailed case, Harvard Bishopric, c. 1840, (ex. Pat Hatch collection).





64

RARE STORAGE BOX

Poplar, original dark cherry stained finish, hinged and dovetailed lid, dovetailed case, original key and lock, very good condition, with written note “probably made by Abner Allen as indicated by type of joining using dovetailing of top board...Enfield Ct. Shaker cabinet maker.”, Enfield, CT, c. 1830-1840, 5 3/4” h, 12” w, 8” d, (ex. estate of Robert R. Sokol Sr. collection).

65

RARE LADDER

Pine, original chrome yellow painted finish, hinged support piece with two long forged iron hooks, Hancock or Mt. Lebanon, c. 1860, (note: only ladder we have ever sold in chrome yellow), 5” h, 22 3/4” w, 35” d, (ex. James Brown collection, Lee, MA).



66

TWO OVAL CARRIERS

Maple and pine, original light varnish finish, two fingers, copper nails and tacks, bentwood handles with double copper rivets, Mt. Lebanon, NY, 7” h (to top of handles), 14 3/4” l, 11” w.

67

THREE PEG BOARDS

Pine, gray/blue paint, eight pegs, 5' 3" l, 2 1/2" w; Pine with thumbnail molding, red stain, eight pegs, 4' 6" l, 3 1/4" w; Walnut, glossy varnish finish, tagged "from the house of John Copley, the Enfield CT Shaker's business agent", 4' 2" l, 3" w; (ex. estate of Robert R. Sokol Sr. collection).



68

PEN AND INK BOX

Walnut, natural dark varnish finish, hinged lid with keyhole and lock plate, dovetailed, three-section interior, left section carved on bottom to fit an octagonal ink bottle, aqua bottle with cork, tagged "Trustee House Church Family, Enfield, Ct.", 3" h, 14" l, 2 3/4" w, (ex. estate of Robert R. Sokol Sr. collection).



69

FOOTSTOOL, AND TWO LABELED BOTTLES

Maple, original dark walnut stained finish, trademark decal "Shaker's, Mt. Lebanon, N.Y.", 6 1/2" h, 11 1/4" x 11 1/2" top; Two wide neck bottles with labels, "Shaker Society, Home Made Spiced Cucumber Pickles, Sabbathday Lake, ME", and "Shaker Society, Ripe Cucumber Pickles, Sabbathday Lake, Maine", both 11" h.



70

CUPBOARD OVER DRAWERS OVER CUPBOARD

Pine and butternut, traces of original red stained finish, two inset panel doors on top opening to separate shelves, over four lipped and dovetailed drawers, over a single door cupboard below, through mortised and pinned on the diagonal, brass twist closure, finely turned Shaker wood pulls, (note: space down below usually used for Shaker footware, and above for bonnets and hats), half round molded baseboard, c. 1840-1850, 6' 9" h, 36 1/2" w, 18" d.



71
CHILD'S ROCKING CHAIR

Maple, original ebony painted finish, acorn finials, three shaped ladders, original Shaker red and beige taped seat, curvilinear arms with caps, Trademark decal "Shakers, No. 0, Mt. Lebanon, N.Y." on back of bottom slat, very good condition, 8 1/2" seat h, 24" overall h.



72
CHILD'S ARMCHAIR

Maple, original walnut stained finish, tiger maple shawl bar, three shaped ladders, curvilinear arms with turned caps, woven splint seat, "1" on back of top slat, Mt. Lebanon, NY, c. 1880, good condition.



73
MINIATURE SHAKER COLLECTION

Approximately 20 pieces including rocking chairs, dining chair, blanket box, candlestand, wood box and stove, circular rug, standing bonnet mold and bonnet, wash stand, etc., made by Gus Schwerdtfeger, Maine; will include letter/correspondence between Mrs. Schwerdtfeger and James Brown's daughter about these miniature pieces, (ex. James Brown collection).

74
SEED BOX AND LABELS

Pine, original red painted finish, original paper label on front "Shakers Genuine Garden Seeds, Mount Lebanon, N.Y", brass wire hinges, sectioned interior with original labels, "Beets, Carrot, Sage & Pepper, Tomato, Flowers, Corn", 3 1/2" h, 23 1/2" l, 11 1/2" d, and Seed Pack envelopes "Blue Imperial Peas...DG... West Pittsfield, Mass.", "Early Washington Peas...D.G.... West Pittsfield, Mass.", blue label "Extract of Garden Lettuce", and "Extract of Red Clover", New Lebanon, N.Y., (ex. James Brown collection).



75

BLANKET CHEST

Poplar, original red painted finish, hinged one board lid with molding, simulated top two drawers, finely dovetailed and graduated bottom drawers, square canted feet, Watervliet or New Lebanon, NY, c. 1840-1850, 42 1/2" h, 43 1/2" w, 19 1/2" d, (ex. Pat Hatch collection).



76

SISTER'S BOX

Pine and butternut, Ministry blue painted finish, dovetailed, brass hinged, lift lid with brass handle and closure, paper lined interior, sectioned lift out caddy, history on bottom "Purchased from Sister Mildred Barker in June 1976...made by Elder Henry Blinn for Sister Mary Olivene Dobson, known as Sister Olive...Took it with her when she moved to Alfred, Maine and to SDL in 1931...verified by Brother Ted Johnson.", 4 3/4" h, 12 3/4" l, 7 1/4" d.



77

STACK OF THREE OVAL BOXES

Maple and pine, original varnish finishes, four-finger construction with chestnut wood top, (small nick at base on left), 8 3/4" l; Three finger with copper tacks, (top shows a split at right rim), 8 1/4" l; Three finger with traces of light red stained finish under varnish, 6" l; (ex. James Brown collection).

78

LIDDED PAIL

Pine, original red/brown stained finish, fitted turned lid with small porcelain pull, brass swing handle with turned maple grip, brass diamond shaped bale plate, two brass hoops, Hancock or Mt. Lebanon, c. 1850, excellent condition, 8" h, 13" h (to top of handle), 9 3/4" dia, (ex. James Brown collection).



79

SMALL VARIEGATED PAIL

Walnut and maple, original varnish finish, brass and turned maple swing handle, two black painted steel bands, c. 1880, 2 3/4" h, 5" h (to top of handle), 4" dia, (ex. James Brown collection).



80

DROP LEAF WORK TABLE

Walnut and cherry, original red/brown stained finish, single full-length drawer, dovetailed with finely turned Shaker cherry wood pull, mortise and tenon construction with wood pegs, square tapered legs, carved triangular leaf supports, c. 1830-1840, 26" h, 36" l, 9 1/2" (leaves), 33" across (with leaves up), (ex. Richard Rasso collection).

81

RARE WOOD BOX

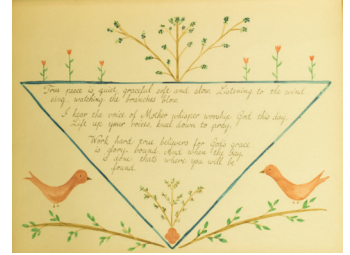
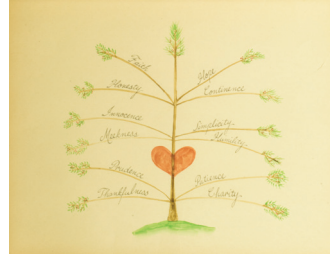
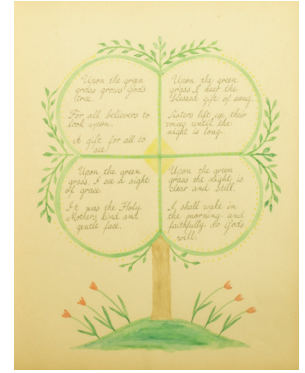
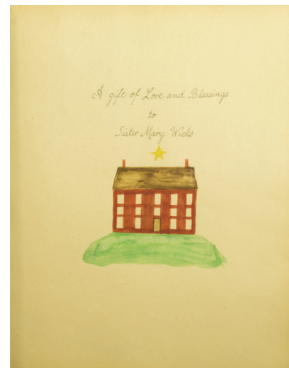
Pine and white wood, original mustard painted finish, simple molded hinged lift lid, some stains, opening to two sections for kindling and logs, carved handle applied to front, 4 1/2" maple wheels at base, box can be easily moved forward and backward so floor can be swept, (note: this is the only wood box we have seen that has this feature), c. 1850, pencil signed in script on inside back "Building #3", 24 1/2" h, 36" w, 15" d.



82

RARE GIFT DRAWINGS

Scrapbook pages with four watercolor "Gifts": the first page depicts a Shaker red Brick Dwelling with a yellow star above and green grass below, titled "A Gift of Love and Blessings to Sister Mary Wicks"; the second page depicts a Sacred Tree separated into four parts, each with a verse beginning "Upon the green grass,..."; the third page depicts a Sacred Tree with central red heart and branches with 12 creeds listed such as "Faith, Hope, Honesty, Contenance...", (this page shows minor tears and a small piece missing at top right); the fourth page depicts branches with blue berries flanked by red tulips, on top of an upside down triangle filled with a poem "I hear the voice of Mother whisper worship God this day...", all pages measure 12" h, 14" w. [The scrapbook is a leather style cover embossed and gilded, tied with a twilled cord, c. 1880-1900. It was found in a group of Shaker objects from an estate. These Shaker pieces were acquired in the Pittsfield area in the early 1900's.]



83

BOBBIN HOLDER

Pine and maple, original brown/red stain, rectangular pine frame with four maple spindles, on a rectangular base, on four octagonal carved splayed legs, tagged "purchased from the Moody family of Shaker Pines Lake (descendants of Shakers)", 25" h, 19" l, 7 1/2" w, (ex. estate of Robert R. Sokol Sr. collection).

84

OVAL BOX

Maple and pine, original chrome yellow painted finish, five fingers, very finely tapered and finished with copper tacks, Hancock Shakers, c. 1830-1840, 5 3/4" h, 13 1/4" l, 9 1/4" d, (ex. James Brown collection).



RARE CUPBOARD OVER DRAWERS WITH SIDE CUPBOARD

Butternut and pine, original red/brown stain, two raised panel doors, over two small drawers, over six lipped and dovetailed drawers with slight graduation upwards, with a three door vertical cupboard to the left, each with raised inset panels, original Shaker threaded and turned pulls (two replaced), and small curved door closures, (note: originally a built-in cabinet but used freestanding, attributed to the workshop of Elder Grove Wright, Enfield, CT, c. 1850-1860, see p. 87, *Shaker Furniture Makers*, Grant and Allen, 1989), 6' 8" h, 5' 2" w, 22" d, (ex. Pat Hatch collection).



86

DOUBLE HANGER

Pine, natural finish, two shaped bars (13" l) on a rectangular pine hanger, 8 3/4" h, (ex. WHA Albany Karl Mendel 1989 collection; ex. Pat Hatch collection).



87

KITCHEN UTENSILS

Tin tea ball, punched with holes, hinged and secured with a folded latch, tagged "Church Family", 5" dia; Two tin strainers, one with an attached screen; Forged iron spatula, with 9" handle terminating in a turned hardwood Shaker pull, 14 1/2" overall l; Brass long handled skimmer, tagged "From John Copley House, Enfield, CT", (ex. estate of Robert R. Sokol Sr. collection).



88

LARGE BRAIDED RUG

Concentric wagon wheel spokes emanating from a central light colored circle, each outlined in two black braids, alternating light and dark, hexagonal scallop shape, each braid made up of three distinct cotton strands, reds, grays, cream, royal blue, olive green, and black, very tightly braided, c. 1900-1920, braided in the Shaker style, mounted on a wood frame for hanging, 52" dia (rug), 54" dia (frame). [See Fig. 55, p. 109, *Shaker Textile Arts*, Beverly Gordon, 1980, University Press of New England.]



89

SMALL ROUND BOX

Pine and maple, original stained light varnish finish, three fingers secured with small copper tacks, very fine condition, c. 1840-1850, (note: a rare size and condition), 1 1/4" h, 2 3/4" dia.

90

SIX SIDE CHAIRS

Four maple Shaker chairs, original red/brown stained finishes, three ladders, red and beige taped seats, (each needs retaping), three New Lebanon chairs with original tilters, (one chair from Watervliet, NY, made without tilters), 16" and 17" seat h, 42" overall h; Two children's chairs, splint seats, Mt. Lebanon, NY, with tilters (one missing), 14" seat h, 36" overall h, and 12 1/2" seat h, 33" overall h, (ex. James Brown collection, Lee, MA).



91

FIVE SHAKER HANGERS

Pine, natural finish, string looped for hanging on pegs, three rectangular bars and two curved pieces, one signed on bottom, 13 1/2" to 16" l, (ex. Pat Hatch collection).

92

TWO SHAKER BRAIDED RUGS

Rug in red, black, blue and gray, in a spoked wheel design, mounted on a black cloth covered frame, 34" dia; Small rug in gray, brown, red and beige, tightly braided in a spoked wheel design, also mounted on a black cloth covered frame, 18" dia, probably Sabbathday Lake, ME; (ex. Pat Hatch collection).





93

CLASSIC SISTER'S WORK STAND

Birch, tiger birch, poplar with bird's-eye maple drawer front, natural finish, single board top with rounded edges, and finely beveled underneath, double pegged and mortised skirt, dovetailed drawer with cherry wood, finely turned, peg-shaped drawer pull, octagonal shaped tapered legs, Mt. Lebanon, NY, c. 1820-1840, 28 3/4" h, 17 1/2" w (at top), 19 1/2" d, (ex. Pat Hatch collection).

94

SISTER'S CARRIER

Maple and pine, original walnut stained finish, original bent-wood handle attached inside with tiny copper



tacks, two fingers, finely shaped, small split at right edge at bottom, almost imperceptible, c. 1840, very fine patina, 2 3/8" h, 6 1/4" h (to top of handle), 8 3/8" l, (ex. Kramer collection; ex. Pat Hatch collection).

95

ELDER'S ARMED ROCKING CHAIR

Maple, old refinish, four graduated ladders, bold curvilinear flat arms terminating in large round caps, newer beige taped seat, early style short rockers, turned stiles ending in a turned heavier base at the rockers, small repair at back of left arm, Watervliet, NY, c. 1840, 15 1/2" seat h, 43 1/2" overall h, (ex. Faul collection).



SMALL OVAL BOX

Pine and maple, original natural finish, three fingers, small copper tacks, excellent condition, 1 1/4" h, 3 1/4" l, with written history, Hazel Hayes purchased from Alma Bridge, who got the box from Emily Copley (Church Family, Enfield, CT), originally owned by Sister Abigail Terry who died in 1857, Enfield, CT, (see note, black ink on blue paper), (ex. estate of Robert R. Sokol Sr. collection).



The Shaker oval (small) paper box natural finish (3 1/2 inches) that I gave to Kate in 1966 I bought from Hazel Hayes for \$7.00. Hazel had gotten it from Alma Bridge sister of Chris Stowe who lived on School Street. Alma got the box from Emily Copley a couple of months before Emily died at the Church Family on Sept. 9, 1911. The box originally was owned by Abigail Terry who died Oct 12, 1857 at age 79. The box was in Shaker Seed labels
Richard Steiner

97

CLOCK SHELF

Walnut, original varnish finish, beveled rectangular top board, bottom backboard with three turned pegs, cutout sides, Enfield, CT, c. 1880, 8" h, 17 1/2" l, 5 1/4" d, (ex. estate of Robert R. Sokol Sr. collection).



98

SMALL OVAL BOX

Maple and pine, original natural finish, three fingers, faintly signed on inside lid in pencil, excellent condition, 1 5/8" h, 3 1/2" l, (ex. Pat Hatch collection).

99

PAIL

Pine, original red stained finish, staved construction, with two staves elongated to hold handle, two heavy riveted iron bands, good overall condition, Enfield, CT, 9 1/2" h (to top of rim), 17" h (to top of handle), 12 3/4" dia, (ex. estate of Robert R. Sokol Sr. collection).



RARE SISTER'S SEWING DESK

Cherry, butternut, maple, and pine, porcelain pulls, six drawer top section (three over three), two full drawer bottom section with figured cherry drawer fronts, top center drawers are both inscribed in pencil on the bottom of each "Adoline Cantral May 12 1874 OH", "No 3" and "No 4", on square tapered legs, (note: this rare Orren Haskins signed piece is the mate to the sewing desk in the Hancock Shaker Museum collection, which is similarly signed "Cornelia French May 12 1874 OH", except this desk is slightly more diminutive in size), 38 1/2" h, 30 1/2" w, 15 3/4" d.



101

COVERED SIEVE

Pine and maple, original dark red stained surface, single finger on lid, woven horsehair sieve, copper nailed bottom lid, some minor roughage under lids, early patinated surface, c. 1830-1840, 4" h, 7" l, 5 1/4" w.



102

RARE HANGER

Pine, finely turned horizontal bar, with attached and mortised upright with hole for peg, 13 1/2" l, 2 1/2" upright, (note: there are variations in Shaker clothes hangers, however, we have never seen this unique version).

103

TRIPOD STAND

Tiger maple and maple, old red varnish finish, round top well used as a work stand, thin turned shaft, spider leg base, tin plate with early forged nails, Alfred or Sabbathday Lake, ME, (note: original top repositioned, a black painted overfinish was removed, early classic), 27" h, 16 1/2" dia, (ex. Brecht collection; ex. WHA, 2011, lot 30).

104

RARE FANCY GOODS FAN

Woven blue silk and split poplar, carved maple handle, good condition, 10" h, 6 1/2" dia, (ex. Pat Hatch collection; ex. WHA).



SISTER'S SEWING CABINET

Cherry, original red/brown varnish stained finish, three flanking drawers across the top, over two flanking drawers, over a larger single drawer on bottom, finely dovetailed drawers, each with lipped, raised and molded edge, all with white porcelain pulls, hinged drop leaf on back with a rare Shaker made cast iron leaf support, raised and molded panel edges on sides and back, canted and tapered feet (9" h), (note: a small 1" wide slide above the drawers with porcelain pull, possibly used to hold individual threads or small sewing implements), Hancock, MA, c. 1840-1850, 27" h (case), 25 1/2" w (case), 35 1/2" w, 9" w (leaf), 14 1/2" w (top). [Left hand drawer with lock plate, right hand drawer signed in chalk on the exterior left side "Henrietta Morgan, June 16." Henrietta lived at East Family, Hancock, and left in 1903. Sold WHA, Cover lot, #80, June 30, 1984. Attributed to Hancock cabinetmaker Elder Grove Wright (1789-1861).]





106

TWO SHAKER DRESSED DOLLS

Porcelain doll dated "1894", poplar bonnet with under cap, white kerchief, black checked dress (some splits), 17" h; Armand Marseille porcelain doll, dressed in a cotton dress with matching Bertha, black shoes and stockings, poplar bonnet, (some moth damage), 15" h; (ex. Pat Hatch collection).

107

SHAKER MADE DOLL CLOAKS AND BONNETS

Eight wool Sister sewn doll cloaks, in reds, browns, black and gray; and six doll's split poplar woven bonnets, with pleated silk backs, different sizes; (ex. Pat Hatch collection).



108

THREE SHAKER DRESSED DOLLS

Porcelain dolls, all with poplar bonnets and cloaks, wool and cotton dresses, fair to good condition, 14" (two) and 16" h, (ex. Pat Hatch collection).



109

THREE SHAKER DRESSED DOLLS

Two porcelain and one composition, wool and linen dresses, fair condition, 12", 13" and 14" h, (ex. Pat Hatch collection).

110

TRIPOD STAND

Maple, original light blue painted surface, (note: small traces of Victorian black varnish remain after being carefully removed from the surface), round top, turned shaft, flat carved and arched legs, Sabbathday Lake, ME, c. 1850, 23 3/4" h, 13" dia top.



111

FOUR SMALL PEG BOARDS

Pine, original natural finish, three pine boards, each with three pegs, 22 1/2" l, and a small walnut board with two pegs, 17" l, Enfield, CT, (ex. estate of Robert R. Sokol Sr. collection).

112

SMALL SIX DRAWER WORK CABINET

Pine, original dark brown painted finish, white porcelain pulls, lipped drawers, square nailed construction, tagged "1860, Church family Enfield Ct. Shakers", 20" h, 14" w, 9" d, (ex. estate of Robert R. Sokol Sr. collection).



113

COLLECTION OF BRUSHES

Whisk broom, wood handle; Black horsehair, double end hat brush, 10"; Multicolor duster, long handle with acorn finial, 16" l; Small whisk with turned handle, in green painted finish, triangular tin grip, 7" l, etc., Enfield, CT, (ex. estate of Robert R. Sokol Sr. collection).



114

RARE HANGING PEG BOARD

Pine, original red/brown stained finish, four pegs, two vertical, beveled finished strips with holes for hanging, 17" h, 56" l, (ex. WHA, ex. Pat Hatch collection).



115

TRESTLE DINING TABLE

Pine, maple and cherry, breadboarded three-board top (38 1/4" w), two arch foot trestles, pegged and mortised, chamfered cleats attached with screws, traces of original red on base, 26 1/2" h, 8' 6 1/2" l, form fitting add-ons on bottom of feet add 1 1/2", c. 1840-1850, (ex. Pat Hatch collection). [Note: This table was originally from a house in Sterling, Mass. owned by a Shaker Sister who moved to her relatives house in Sterling when the Harvard Community closed in 1918. Sold at Skinner's Auction in approximately the year 2000 to collectors Fran and Herb Kramer who sold it to Pat Hatch. The Shaker top appears to have been redone in the 1880's with the four extra cleats chamfered and inset with the screws aligned in the Shaker way.]





117
SISTER'S BERTHA, AND STOCKINGS

Finely woven cotton, light brown checkered pattern Bertha, with deep red fringe, hand sewn; Sister's white cotton stockings, both initialed "CA" in green thread, and pinned with a paper tag "Mary Catherine Allen was an early Shaker (did not use the Mary) of Harvard", also sewn tag "From the Harvard Shaker Colony", Miss. Marian; (ex. Pat Hatch collection).

116
SET OF SHAKER SIDE CHAIRS

Cherry, birch and maple, original red/brown stained finish, flame finials, three graduated slats, early rush seats, one chair with "RS" on top slat, c. 1830-1840, Harvard Shakers, 16 1/2" seat h, 42" overall h, (ex. Pat Hatch collection).



118

SISTER'S SEWING STAND

Cherry and pine, natural varnish finish, single board top with molded edge, single drawer with lipped and molded edge, dove-tailed, turned wood pull, square tapered leg, (note: found at a house in Sterling, MA from Harvard Shaker Sister who moved there in 1918), Harvard, MA, c. 1840-1850, 25" h, 17" w, 16" d (at top), (ex. Pat Hatch collection).



119

COLLECTION OF SHAKER PINCUSHIONS AND SPOOL HOLDER

Four Shaker tomato style sewn pincushions: light green (6" dia), blue (4 1/2" dia), purple (3 1/2" dia), and light red/brown (2" dia); Bees wax with yellow ribbon; Maple with five steel pins for spools, turned shaft supporting a green tomato pincushion, and five colored strawberry emeries, and a 2 1/4" tomato pincushion in chrome yellow; Two Sabbathday Lake pincushions with poplarware sides, stamped on bottom, 2 1/2" dia; Canterbury pincushion with wallpaper bottom, trimmed in white kid leather, 3" dia; (ex. Pat Hatch collection).



120

SISTER'S TRIPOD DOUBLE DRAWER SEWING STAND

Birch, pine and cherry, old natural finish, square top with rounded corners, over two dovetailed drawers, each with delicate turned pulls on both sides, (note: two Sister's could access the drawers from either end), finely turned cherry shaft with arched tripod legs, Hancock Bishopric, c. 1840, 25" h, 19 1/4" w, 17 1/2" d, (ex. Brecht collection; ex. WHA 5/29/11).

121

SISTER'S SEWING TABLE

Butternut, poplar and tiger maple, original red stained finish, tiger maple cased six-drawer add-on top with white porcelain pulls, over a raised gallery top with tiny white porcelain hangers around the edge, single dovetailed drawer with finely turned cherry pull, on tapered square legs, two splits on top of table, small missing piece of veneer on left bottom drawer front, New Lebanon, NY, c. 1840, (add-on top c. 1870-1880), 37 1/2" h, 27" w, 17 1/2" d, (ex. James Brown collection, Lee, MA).





122

CHILD'S ROCKING CHAIR

Maple, original light yellow/red stained finish, flame finials, two beveled ladders, early taped seat, wool batting with red, blue and green stripe, some repairs underneath with Shaker green and beige striped tape, shaped rockers pegged into stiles, small decal on center front of top slat of a bunny, Enfield, NH, c. 1840, 12" seat h, 30 1/2" overall h.

123

WORK COUNTER

Pine and butternut, original faded red stained finish, six drawers lipped and dovetailed, double inset panel ends, square canted feet, original turned and threaded Shaker drawer pulls, c. 1840, very fine condition, (note: classic Shaker design), 33" h, 57" w, 28" d.



124

TWO GRAIN BAGS, BLANKET

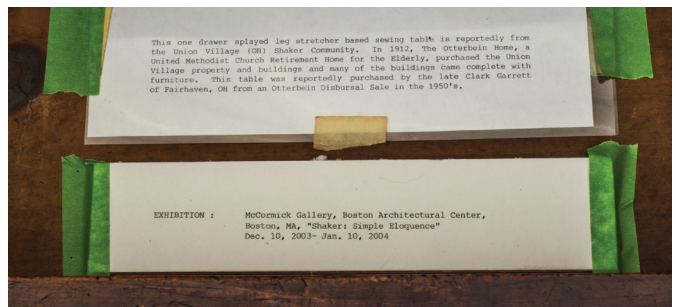
Cotton grain bags, marked in stencil "L.T. Colby, Enfield, N.H. No 35", "Ozark A Seamless", brown side stripes, 41" l, 19 1/2" w; the other with brown side stripes, marked "WW 2F" in blue thread, "A Seamless", "WW", 39" l, 18" w; Lightweight cotton blanket or throw, marked "C.H.H., Enfield, N.H.", embroidered in blue thread "CR" in one corner, 4' 8" x 3' 3" (ex. Pat Hatch collection).



125

ONE DRAWER SEWING TABLE

Pine and maple, original dark varnish red stained finish, underhung full-length drawer with walnut turned pull, splayed legs with octagonal stretchers on brass casters, reportedly from Union Village Ohio Shaker community, once owned by Clark Garrett, famous Fairhaven, Ohio dealer, 25" h, 20 3/4" w (at top), 13" d. [Exhibited McCormick Gallery, Boston Architectural Center, Boston, MA, "Shaker: Simple Eloquence", Dec. 10, 2003 - Jan. 10, 2004.]



126

BLANKET, PILLOW CASE, TOWEL

Summer blanket, marked in blue "CHH W", and tagged with cloth label "office", Enfield, NH, 72" x 42"; Canterbury, NH linen pillowcase, marked in red "EMR 2", 30" l, 17" w; Shaker wall protector/towel with cloth loops, marked in red "C.B.Y.", 46" l, 19" w (ex. Pat Hatch collection).



127

SIX INITIALED SISTER'S KERCHIEFS, AND SISTER'S CAP

Blue and white striped on finely woven cotton, "EH"; Finely woven neckerchief initialed "Sh", slight stains; Finely woven Shaker scarf, initialed in blue embroidery "PV"; Another initialed in blue embroidery "E BRV 74"; a fifth embroidered "1" in blue; Very finely woven Sister's gauze cap and kerchief; (ex. Pat Hatch collection).



128

RARE CORNER SHELF

Walnut, original natural finish, five graduated half-round shelves, three carved vertical uprights, attached to shelving with screws, back foot lower than front so shelf cants backward, Enfield, CT, c. 1860-1880, 40" h, 20" 2 (at bottom), 14" d, (ex. estate of Robert R. Sokol Sr. collection).



129

RARE BOLT OF SHAKER FABRIC

Red and blue woven cloth, permanent press, initialed in white embroidery "NF", (note: probably Mt. Lebanon, NY), approximately 40' l, 35" w, (ex. Pat Hatch collection).



130

HANGING CUPBOARD

Pine, original natural finish, double panel door, double pinned on diagonal, through mortised, shelf interior with divided top shelf and bottle holder on left side, Harvard, MA, c. 1840, 42 3/4" h, 29" w, 11" d.

131

RARE OVAL BOX

Pine and maple, original yellow stained finish, six fingers, small symmetrically aligned copper tacks, finely shaped fingers, exceptional condition, (note: consigned by a gentleman whose grandmother purchased the box from the New Lebanon Shakers in the 1920's), 7 3/4" h, 14 3/4" w, 10 3/4" d.



132

CUTTING BOARD, HANDLED CHOPPER, AND MIXER

Poplar, single board with extended handle, rounded corners, 16" h, 27" l; Vegetable chopper, with turned handle and curved steel blade, 8 3/4" l; Maple spinning mixer, tapered handle with end terminating in two half-round disks, with drilled holes inset into handle, good patina, Enfield, CT, 16" l; (ex. estate of Robert R. Sokol Sr. collection).



133

DESK BOX, AND PHOTOGRAPHS

Pine, original red painted surface, half-inch raised back-splash, slanted lid, lipped and dovetailed drawer, small brass openwork pull on front latches the drawer when turned vertically, (small nick out of bottom right corner), finely dovetailed case, 4 3/4" h, 14 1/2" w, 12 3/4" d, with note "From Enfield Shaker Colony to Arthur Rock, his son Herbert, wife Gertrude Rock"; five photographs of Canterbury and Enfield, NH Shaker Sisters including Grace Holbrook and Mary Darling, Mary Baseford and Elizabeth Estabrook, and A. Howland, E. Hudson, Flora Appleton and M. Frost of Canterbury; also includes newsclippings from the Manchester Union Leader 1988 and 1990 concerning the Shakers, Yankee Magazine from August 1988 about Eldress Bertha Lindsay, and an early paper cookbook.



134

TRIPOD STAND

Cherry and chestnut, original dark stained varnish finish, simple graduated and turned shaft, attached to round top with circular “doughnut” with four inset screws, tripod base with original metal plate, old pegged repair to one leg at curve, and an edge scuff on top, labeled underneath “Candlestand, dining room...”, from the Belfit collection, descended through the family to this auction, c. 1840-1850, 26” h, 16” dia.



135

EARLY CUPBOARD OVER DRAWERS

Pine, traces of original yellow painted finish, with additional yellow, long vertical raised panel door, opening to three full shelves and two half shelves, over four graduated, lipped and dovetailed drawers, with original long turned hardwood peg pulls, (note: a small early Shaker cupboard with sectioned drawers and originally built-in), Harvard, MA, c. 1800-1830, 6' 3" h, 24" w, 14" d, (ex. Pat Hatch collection).

136

**FANCY GOODS POPLARWARE
BOXES AND TRAY**

Octagonal sewing box with two bees wax, gold emery, tomato pincushion, poplar needlebook, 5 1/4" w; Small round, poplar covered paper box, (some rim wear), 2 1/2" dia; Half-round box with green silk lining, 3 1/2" w; Scalloped top oval tray, (some wear to kid leather trim), 7" w; Square box, 4 1/4" sq; (ex. Pat Hatch collection).



137

SMALL OVAL BOX

Pine and maple, original bright red painted finish with varnish, four fingers with small copper tacks, 1 1/2" h, 3 1/4" l.



138

CONVENIENCE CHAIR

Pine, original red painted finish, hinged seat lid with inset cleat, curvilinear arms, arched sides, hinged backboard for retrieving pot, probably Harvard Shakers, c. 1840, 29" h, 20 1/4" w, 15" d, (ex. Pat Hatch collection).



139

**SISTER'S BONNET AND BAG,
TWO BOYS STRAW HATS**

Variegated poplar bonnet, "9" on a paper label on inside, small tapered split on edge; Boy's wide brimmed hats, one black, and one natural; Small striped shoulder bag with palm leaf woven strap, 5 1/2" x 6 1/2", (ex. estate of Robert R. Sokol Sr. collection).



140

**HANGING UTILITY
CUPBOARD**

Pine, original red painted finish, two plank doors, two brass pulls and carved wood door closures, nailed construction, Enfield, CT, c. 1850-1860, 26" h, 24" w, 8 1/2" d, (ex. estate of Robert R. Sokol Sr. collection).

141

STORAGE BOX

Pine, original red stained finish, handmade Shaker hinges, lid with beveled edges, interior beveled cleats, dovetailed box, Shaker made latch, wallpapered interior with \$5.00 price tag on left side, (note: tag could be from Canterbury as some tags of this type were in the McCue collection), 9" h, 19" w, 9" d, (ex. Withington Auction; ex. Pat Hatch collection).



142

OVAL BOX

Maple and pine, original cherry red painted finish, four fingers, finely shaped right to left, copper tacks and iron points, New Lebanon, NY, c. 1830, 4 3/4" h, 11 3/8" l.



143

FIXED HANDLE CARRIER

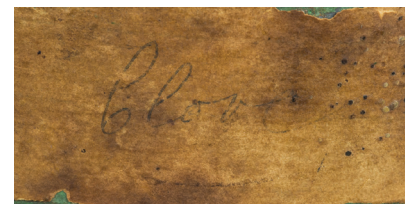
Pine and maple, original chrome yellow painted finish, three fingers, handle shows a fixed break at the top, Canterbury, NH, c. 1820, tagged "Purchased from the Cassavant estate, New Lebanon, N.Y.", 4" h, 9 1/2" h (to top of handle), 13 1/4" l, 9 1/8" d, (ex. Ed Clerk collection).



144

OVAL BOX

Pine and maple, original green painted finish, three fingers, paper label on back "Cloves", (note: a strong scent of cloves in the box), original green painted bottom, 2 1/4" h, 5" w, 3 3/4" d.



145

SISTER'S SEWING TABLE

Cherry, pine and birch, cherry wood top, with raised rim, two dovetailed drawers, with hardwood turned pulls, one at front and one at side, in a deep figured birch skirt, square tapered legs, c. 1850, 31" h, 30 1/2" w, 32" d.

146

BROTHER'S WIDE BRIM HAT

Felt, black silk band, slight wear around rim, 5" h, 15" l, 14 1/2" w.



147

TWO PENWIPE DOLLS, AND PINCUSHION

Painted clay dolls, with colored felt penwipes, 2 1/2" h; Circular silk and pink velvet pincushion, with hand-painted scene of the Meeting House "Old Church, 1772", and ink stamped on the back "East Canterbury Shakers", 2 1/4" dia; (ex. Pat Hatch collection).



149

ROCKING CHAIR

Maple, original red stained finish, tall acorn finials, four slats, curvilinear arms terminating in mushroom shaped caps, early woven cane seat, stamped "7" on back of top slat, Mt. Lebanon, NY, classic Shaker production chair, 16" seat h, 41 1/2" overall h.



148

ARMCHAIR

Maple, original walnut stained finish, shawl bar over four slats, curvilinear arms terminating in mushroom shaped caps, red and gray stripe taped seat, stamped "6" on back of top slat, Mt. Lebanon decal on back of bottom slat, Mt. Lebanon, NY, c. 1870-1880, 14" seat h, 39 1/2" overall h.





150

CHEST OF DRAWERS

Pine, original red painted finish, five drawers tall, top drawer is lower in height than bottom four, inset panel ends, second drawer has four small interior lipped drawers, pulls are pegged, 37 1/2" h, 31 1/2" w (case), 16" d, (sold WHA 1982 - Cover Lot).

151

TWO SPOOL HOLDERS

Cherry wood, circular disk with five carved wood spool holders (one missing), with spools and thread, turned cherry wood 3" handle, originally from the Bissland collection, 5 1/2" dia; Finely turned spool holder with five red spools, two separate pieces, 5" h, 4" dia. [Note: measure is part of lot 154.]



152

SISTER'S BOX

Butternut, original varnish finish, finely dovetailed case, mother-of-pearl circular escutcheon, brass hinged lid with brass swing handle, signed inside lid "Eldress C. Helfrich, S.F. 1886, N.F. 1887, C.F. 1887.", "She and Elder Albert Battles were the last of the Ministry at Hancock, Mass.", Eldress C. Helfrich (1836-1929), (sold WHA 2014, lot 53).



153

21 SHAKER LABELS

19th c. colored paper labels for herbs, garden seeds, extracts and ointments, framed in a cherry and glass frame, for example "Wormwood", "Henbane", "Bittersweet", "Rosewater", New Lebanon, NY, "Turnip", Enfield, NH, and "Witch Hazel", manufactured by the Canterbury Shakers, Canterbury, N.H.", 14" x 20" (frame).



154

CARRIER AND MEASURE

Pine and maple, original stained varnish finish, light reddish color, tall fixed handle, three fingers, small round head brass tacks, originally from the McCue collection, 3 3/4" h (to rim), 9 1/2" h (to top of handle), 9 7/8" l; Measure, pine and maple, original red stained finish, copper tacked seam, originally from the Bissland collection, 3 1/2" h, 5 3/4" dia.



155

WASH STAND

Pine, poplar and walnut, traces of original yellow stain, raised and dovetailed panels, arched back, sloping sides, two shelf interior, tongue and groove panel door, rectangular cleats with inset screws, turned walnut pull, turned brass door closure, through mortise and pegged construction, age shrinkage, 37" h (to the back), 20" w (case), 16" d (case).



156

TWO OVAL BOXES

Pine and maple, original khaki brown paint, four fingers right to left, overall good condition, 3 1/4" h, 8 3/4" l; Pine and maple, early Shaker light green over light blue, four fingers, Sabbathday Lake or Alfred, ME, c. 1850, 4 3/4" h, 11 1/4" l.

157

RARE CANDLE SCONCE

Fruitwood, original patinated brown/red stained varnish finish, rectangular, thin stock, tapered vertical board with two holes for hanging, attached in the rear to a half circular carved platform for a candle holder, a small, finely carved rectangular hardwood piece attaches the two pieces, 13" h, 5" w. [Pictured in *Hands to Work*, Marian Klamkin, p. 204, ex. the Belfit Collection "candle sconce, made by Shakers, is graceful and nicely proportioned." Klamkin.]



158

FRAMED SHAKER "PEACHES" LABEL, AND CROCHETED MAT

Yellow paper with red print and design, "Preserved Peaches, ready for the table from the Harvard Shakers. Sold by William Leonard, Groton Junction, Mass.", 4 3/4" h, 6 1/2" w (label), 22 1/2" x 21" (frame); Crocheted mat mounted and framed, red, gold and green, 19" dia (mat), 26 1/2" sq (frame).



159

FOUR RECTANGULAR SLIDE LID BOXES

Walnut and pine, natural varnish finish, 1 1/2" h, 6 1/4" l, 4 1/2" w; Raised carved lid, six sectioned interior, tagged "Church Family, Enfield, CT.", dovetailed case, 2 3/8" h, 8 1/4" l, 5 3/4" w; Yellow pine, dovetailed, two interior lidded compartments, signed under lids "John, 6th Feb.", tagged "Bought from Alma Bridge, she said from John Wilcox, Church Family, Died Feb-4-1900 age 83", 3 1/2" h, 13" l, 6 1/4" w; Poplar with original brown stain, dovetailed case, six sectioned interior with paper labels, "Strawberry Root", "Button Snake Root", "Skunk cabbage Root", etc., 3 3/4" h, 13" l, 7" w; (ex. estate of Robert R. Sokol Sr. collection).

160

RARE KNEE-HOLE DESK

Pine, early red stained finish, single board pine top (21 1/2") with rounded corners, two banks of dove-tailed drawers with original white porcelain pulls, bottom left double drawer initialed "AS" and dated "1863" in red, center drawer bottom signed "2 House" in red, attributed to Elder Amos Stewart (1802-1884), Master Cabinetmaker, and made in 1863, 30 1/2" h, 45" w, 21" d, (ex. Sotheby-Parke Bernet Inc., New York, NY, 1985, Lot 852, to the current owner).



161

SISTER'S STEP, SIFTER AND BAKER'S PEEL

Cherry, dark walnut stain, two levels, with 5" turned supports, 9 1/2" h, 13" l, 7 1/2" w; Sifter, pine, maple, tin, screen, turned maple handle, arched ends, 12 1/2" h, 10" w, 9 1/2" d; Small oak baker's peel, carved from one piece of wood, 4" shaped handle, 17 1/2" l, tagged "Mt. Lebanon Shaker wooden peel, c. 1840, Ex. Darrow School Auction, 1961."



162

TWO MAIL BOXES

Walnut, original finish, nine section case, finely dovetailed, tagged "Trustee House, Church Family, Enfield, CT.", 12" h, 13 1/4" l, 8 1/4" d; Walnut, twelve section box, dovetailed, a few of the openings are labeled as "Kezia Lyman" and "Hannah Wilson", Church Family, Enfield, CT, 14" h, 16 1/2" w, 8 1/2" d; (ex. estate of Robert R. Sokol Sr. collection).





163
TRIPOD STAND
 Cherry and maple, old
 refinish, round top,
 beveled cleat attached
 to top with symmet-
 rically placed screws,
 turned shaft pegged
 into cleat, arched tripod
 base, South Union,
 Ohio Shakers, c. 1840-
 1850, 26" h, 16" dia.



165
TALL CLOCK
 Pine, early red painted finish with
 varnish over, removable bonnet with
 through mortise and pegged case,
 snipe hinged door, face with floral top,
 and quadrant corners, cut steel hands,
 wood work with cast iron bell, origi-
 nal weights and pendulum, found in
 Albany, NY, 6' 8" h, 20" w, 10" d.

164
UNIQUE OVAL BOX
 Pine and maple, completely decorated in Victorian pyrography,
 depicting flowers, vines and leaves, four fingers, two piece card
 covered interior, sewn with blue silk, signed inside in pencil on
 the bottom "For Emma Pease, Enfield, CT., 1868, P. Smithson",
 5" h, 11 3/4" l.





166

ADD-ON CHEST

Cherry and pine, original dark walnut stain, dovetailed top well with three sections, bottom with four flanking, small dovetailed drawers, with brass pulls, Enfield, CT, c. 1840-1850, 10 1/2" h, 38 1/4" l, 8" d, (ex. estate of Robert R. Sokol Sr. collection).



167

WORK TABLE

Butternut and cherry, single board top, top attached to skirt with screws with four diamond shaped covers, on four square tapered cherry legs, c. 1840, 25 1/2" h, 32" l, 20 3/4" w.

168

SMALL EARLY CUPBOARD OVER DRAWERS

Pine, original red/brown stained finish, plank hinged door with battons secured with inset exterior screws, single recessed shelf interior, five dovetailed drawers, top three drawers are partitioned, bottom two drawers are larger and detached from top drawers, molded base, some scratches and small repairs, found in Acton, MA, purchased from a picker in 1978, Harvard Community Shakers, 5' 5 1/2" h, 24" w, 13" d, (ex. Pat Hatch collection).





169

BROTHER'S WORK SHIRT, AND STRAW HAT

Linen, natural, four cloth covered buttons, three pockets, summer weight, from an upstate New York auction, 39" l; Woven straw hat with black cloth bands, some minor edge wear; (ex. Pat Hatch collection).



170

BROTHER'S ROPE BED

Pine and maple, old varnish finish, shaped pine headboard, turned posts terminating in original Shaker cast iron sockets and wood wheels, original interlocking rails, lengthened later with pegs for a taller Shaker, original bolts, 31" h, 6' l (rails), 35" w.



171

BENCH

Pine, old varnish finish, rounded ends, sides through mortised into top, rounded front board, bootjack arched ends, Mt. Lebanon, NY, c. 1850, 16 3/4" h, 6' w, 10 3/4" d, (ex. Pat Hatch collection).



172

SEWING WORK TABLE

Butternut, cherry and tiger maple, natural finish, single board butternut top with applied raised edging, cherry wood dovetailed drawer with walnut pull, square tapered tiger maple legs, c. 1840, very good condition, 27" h, 18 3/4" w, 18 1/2" d, (ex. Pat Hatch collection).



173

SMALL INFIRMARY CUPBOARD

Walnut, original varnish finish, arched top with holes for hanging, single panel door with brass pull, open space inside for medicines, upper portion is recessed to hold bottles and first aid supplies, tagged "Used in Dispensary, Enfield, CT. Shakers", 11" h, 14 1/2" w, 7" d, (ex. estate of Robert R. Sokol Sr. collection).

174

TWO STEP STOOL

Pine, original cranberry red painted finish, bootjack arched sides, normal in-use wear on treads, New Lebanon, NY, c. 1840, 20 1/2" h, 15 1/2" w, 14 1/2" d.





175

EARLY WORK TABLE

Maple and pine, old two board brown stained finish, breadboard top pegged onto skirt, lipped and dovetailed drawer, finely turned pull, pegged inside drawer, double pegged at skirt, tapered square leg, (purchased at the R. Withington estate auction of Mrs. Benjamin Moore in Center Harbor, NH, October 1966), 27 1/2" h, 45" l, 28" d, (ex. McCue collection).

176

GATHERING BASKET

Black ash, tall shaped hoop handle, round top, squared bottom, double wrapped rim, woven wood skids on bottom for reinforcement for use in gathering vegetables and fruit, 11" h (to rim), 17" h (to handle), 16 1/2" dia, 10" x 11" (bottom), (ex. Pat Hatch collection).



177

TWO PAILS

Maple sugar pail, pine, original yellow painted exterior and red interior, two iron bands, stamped on bottom "N.F. Shakers, Enfield, NH", 2", 9 1/2" h, 11 3/4" dia; Lidded utility pail, pine, original cranberry red painted finish, wire swing handle with turned maple grip, diamond shaped escutcheon, stamped on bottom "N.F. Shakers, Enfield, NH", 8" h (to rim), 10" dia, (ex. Pat Hatch collection).

178

BLANKET BOX

Pine, original blue painted finish, single board lid with fitted cleats on both sides, symmetrically nailed construction, lock and lock plate, Harvard, MA, c. 1840-1850, signed in pencil under lid "This Trunk was given...Hattie A. Brown.", 17 1/2" h, 38" l, 14 3/4" d, (ex. Pat Hatch collection).



179

LAUNDRY BASKET AND CLOTHESPINS

Black ash, two carved handles, double wrapped rim, 19" h (to top of handle), 18 1/2" dia, with attached small, oval top, rectangular basket (8" h, 12 1/2" l) used for clothespins, along with six oak clothespins, secured with copper rivets, each stamped "MSF" (Ministry - South Family), Sabbathday Lake, ME, 4 1/2" l, (ex. Pat Hatch collection).



180

TRIPOD STAND

Birch and maple, dark cherry varnish finish, cylindrical tapered shaft, and arched base with pad feet, small break and repair at base, 27" h, 15 1/2" sq top, (ex. Richard and Betty Anne Rasso - sold to consignor).



181

TWO FANCY GOODS HANGING POCKETS

Woven cotton and linen stitch trimmed in red wool tape, "Combs & Brushes", "H.M.C.", Sabbathday Lake, ME, (ex. Pat Hatch collection).





182

SMALL SIX DRAWER CHEST

Pine, original red/brown stained finish, graduated, dovetailed drawers, with original Shaker turned cherry wood pulls, molded overhung top, applied step molded base, c. 1860, 44 1/2" h, 22" w, 19 1/2" d.



183

OVAL CARRIER

Maple and pine, oak swing handle, five finely shaped fingers, holes drilled for fittings, signed under lid "Wincapaw" in pencil, 5 3/4" h, 13"

184

SMALL ROUND BOX

Pine and maple, khaki green over original blue painted finish, three fingers (right to left), Sabbathday Lake or Alfred, ME, c. 1840, 2 1/8" h, 4" dia.



185

TWO DOUGH BOXES

Pine, original bittersweet red painted finish, one board lid with handles, canted sides secured with screws and symmetrically placed nails, Hancock or New Lebanon, c. 1850, 13 3/4" h, 36" l, 15 1/2" d; Poplar, with original light yellow varnished stain, canted and dovetailed sides, applied carved handles at ends, base extends 3/4", two-board fitted lid with carved horizontal skids, probably used for stacking similar dough boxes, Hancock, MA, c. 1850-1860, 9 1/2" h, 28" l, 14" w; (ex. James Brown collection).





186

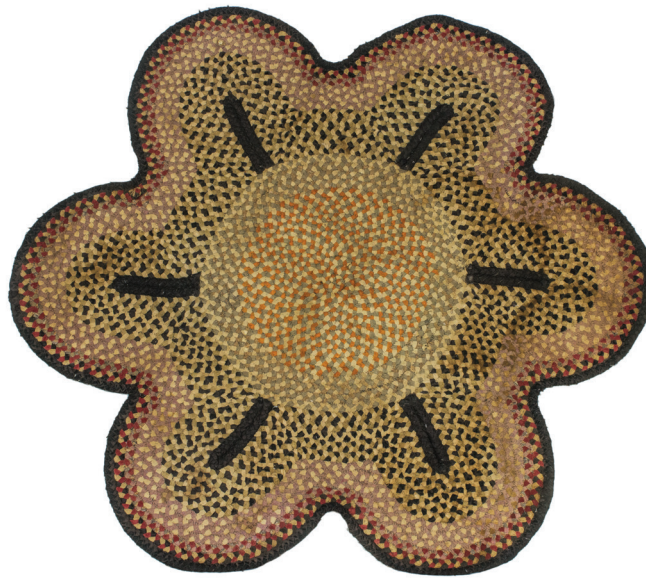
SISTER'S KNITTING NEEDLECASE AND SPOOL BOX

Turned maple with threaded round lid, initialed inside "OS" on applied paper, approximately 12 knitting needles, paper history "Bought from Hazel Hayes...belonged to Sister Olive Stebbins...", 6 1/2" h, 2 1/4" dia; Sister's spool box, walnut, original natural varnish finish, brass hinged lid with seven holes in front for thread, brass lid closure, 3 3/4" h, 8" l, 4 1/2" d, (ex. estate of Robert R. Sokol Sr. collection).

187

SHAKER BRAIDED RUG

Spoke wheel design, hexagonal scalloped edge, bound in black braid, light brown, cream, grays and red, some minor stains and lightly faded, overall good condition, tagged "Hancock Shaker Rug, Estelle", 41" dia, (ex. Pat Hatch collection).



188

FOOTWARMER, AND TWO BOOTSCRAPES

Cherry wood, natural patinated finish, wire bail handle, tin coal carrier, sliding front panel with drilled diamond-shaped pattern, circular patterns on sides, splits on top with wire repair, Enfield, CT, c. 1830; Early wrought iron bootscrape with ram's horn design top, very worn, attached to a pine block, tagged "So. Family Shakers, Enfield, CT."; Wrought strap iron, "V" shape with curled ends, tagged "North Family, Hired Mans House, mounted on a red oak cut off stump", 7" h, 10" l; (ex. estate of Robert R. Sokol Sr. collection).





189

FOOTSTOOL, AND LOW BENCH

Pine and cherry, original red painted finish, cut-out foot with arched bootjack ends, c. 1840, 7 1/2" h, 26" l, 8" d; Chestnut bench, original weathered red painted finish, bootjack ends, slight overhang on front and back, thumbnail molded skirt, South Family, Enfield, CT, 10" h, 40 1/2" l, 11 1/2" d; (ex. estate of Robert R. Sokol Sr. collection).

190

TALL WOOD BOX

Pine, early green painted finish over blue, rounded hinged lid with inset hinges, double cleated on the inside, four board front, each rabbeted with a spline, found near Waterviet, NY, c. 1880-1890, 37" h, 27 1/2" w, 14 3/4" d.



191

CORN SHELLER, AND TWO LARD PRESSES

Maple, original red painted finish, swiveling turned wood hinge, with hundreds of square nails on inside of both boards to shell the corn, long handle part of top board, 4" h, 24" l, 9" w; Tagged South Family (Enfield, CT) hardwood metal hinged press, with rectangular handle, 13" l; Oak press with long handles, 20 1/2" l; (ex. estate of Robert R. Sokol Sr. collection).



192

TABLE TOP CORN SHUCKER, AND A SPLITTER

Cherry wood, with steel blade and nail points, corn shaped hollow board, on three turned legs with ball feet, 5 1/2" h, 12 3/4" l, 3 3/4" w; Small walnut, triangular machine, with interior blades and a pull-out drawer in the back, (note: probably a scale model for a much larger machine).



193

RAG RUG RUNNER

Half stripe and half random multicolor, reds, yellow, blues and black, some minor repairs, overall good condition, 17' 8" l, 34 1/2" w.



194

RECTANGULAR STORAGE BOX

Pine, original blue painted finish, hinged lid with dovetailed breadboards and through mortised, dovetailed case, 6" h, 18 1/2" w, 11 1/2" d, (ex. Pat Hatch collection).



195

ADD-ON CUPBOARD OVER DRAWERS

Cherry and pine, original red stained finish, two door cupboard, vertical partitioned interior left side, partitioned with mail slots on right, three flanking dovetailed drawers below, walnut pulls, c. 1850, 22 1/4" h, 40" w, 10 1/2" d.



196

SEWING BASKET

Black ash, round with flared sides, finely carved inset handles, double wrapped rim, cloth lined interior, cotton print with red flowers, Canterbury, NH, c. 1880, 5" h, 14 3/4" dia, (ex. Pat Hatch collection).



197

WORK STAND

Cherry and pine, red stained varnish finish, dovetailed drawer, turned hardwood pull, square legs, 27 1/2" h, 21 3/4" w, 18" d, (ex. James Brown collection, Lee, MA).

198

ROCKING CHAIR

Maple, original red stained finish, three graduated slats, small rockers attached with original screws to front and back stiles, Harvard, MA, c. 1830, 17 1/2" seat h, 42" overall h, (ex. Pat Hatch collection).



199

SMALL STEP STOOL

Walnut, original varnish finish, painted arch top, shaped trestle feet, c. 1860-1880, 18 3/4 h, 12 1/2" w.



200

WOOD BOX, AND KINDLING CARRIER

Pine, old gray/purple painted finish, extended top with shaped cleats, Enfield, CT, 20 1/2" h, 24" w, 13 1/4" d; Kindling carrier, pine, old gray painted finish over original red, dovetailed box, bent hoop handle affixed with screws, (note: repurposed as an egg carrier), tagged "North Family", Enfield, CT, 13" h (to top of handle), 16 1/2" l, 13" w; (ex. estate of Robert R. Sokol Sr. collection).



201

PINCUSHION, AND SISTER'S SEWING BOX

Maple with light green velvet top, adjustable turned clamp for table top, 4" dia top, 8" overall h; Bentwood swing handle, lidded round carrier, fitted with light blue satin interior, with poplarware needlebook, strawberry emery, tomato pincushion, and bees wax, by Mrs. Ralph Wilson, sister-in-law of James Brown, Lee, Mass., 4" h, 7 3/4" dia, (ex. James Brown collection).



202

SISTER'S WINTER BONNET, JACKET, AND POT HOLDER

Iridescent brown and gray silk, quilted bonnet, down filled with multicolor silk ties; Sister's quilted jacket, with red and white polka dot interior; Quilted pot holder in brown and gray; (ex. Pat Hatch collection).





203

FOUR SIEVES

Maple and horsehair, one tagged "Enfield, CT," 8, 9, 9 1/2" and 10" dia, (ex. estate of Robert R. Sokol Sr. collection).



204

TWO SHAKER HERB PACKS

Pressed and wrapped in brown paper, and labeled "Bone set,...United Society Ayer, Mass.", and "Celandine Garden,...United Society, South Groton, Mass.", 1 3/4" h, 8 1/4" l, 4" w, (ex. Pat Hatch collection).



205

WORK STAND

Pine, traces of original blue stained finish over red, two dovetailed drawers, larger top drawer has three sections, possibly for ink and pens, above a shallow smaller drawer, both with walnut turned pulls, mortised and pegged, square tapered legs, Harvard Shakers, c. 1850, 29" h, 19 1/2" w, 19" d, (ex. Ed Case, Harvard, MA; ex. Pat Hatch collection).

206

TWO SHAKER MEASURES

Oak with shaped strap iron reinforcements, wrapped rim, one stamped "ND" (Nathaniel Draper, first Trustee of Enfield, NH, served 1793-1838), 6" h, 12 1/2" dia.



207

MITTEN FORMS, AND HAT STRETCHER

Maple, traces of red stained finish, brass hinged, hole for hanging; Hat stretcher, walnut blocks with turned handle, threaded through the blocks, Enfield, CT, 12" h, 14" l, 6" dia; (ex. estate of Robert R. Sokol Sr. collection).



208

VICTORIAN SEED CABINET

Cherry, walnut and poplar, original dark finish, thin molded top over an open 24-sectioned cabinet, full-length drawer below, molded base, "Used in Seed House, Church Family, Enfield Shakers", 21 1/2" h, 13 3/4" w, 11" d, (ex. Richard Steinert; ex. estate of Robert R. Sokol Sr. collection).



209

OVAL BOX

Pine and maple, original natural finish, four fingers, hand forged copper tacks and points, overall good condition, c. 1840-1850, 4 1/8" h, 10 1/8" l, 7" w.



210
WORK TABLE

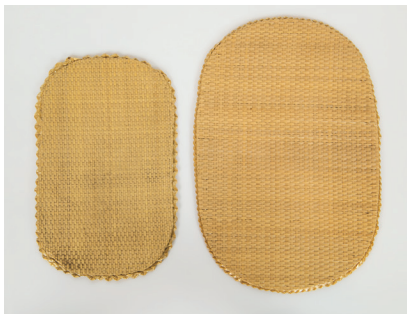
Pine and maple, single board pine top, secured with six inset forged screws, (shows a repaired split on one corner), traces of original red paint, (top has traces of a white overpaint, short skirt, square to turned legs, c. 1840, 28" h, 34" l, 21 1/4" w.



211
SOCK STRETCHERS, AND GRAIN SHOVEL
Carved pine, size "11 1/2"" in pencil at top, 31" l; Carved maple shovel, (one piece), original brown stained finish, good condition, 36" l, 12" w.

212
SHAKER WOVEN "FANCY GOODS" POPLARWARE

Two woven covered paper boxes with hinged lids, small one with braided string handles on sides, 3" l; Larger box trimmed in green sewn cloth, oval box with swing handle, with decoupage picture of a child on lid, 2 1/4" h (to rim), 4 1/2" l; Square covered basket, with silk lined interior, hand sewn, good condition, 2 1/2" h, 5" sq; (note: these are museum quality Sister's pieces); Five rectangular and oval table mats, woven by the Sister's for the Shaker stores, also includes a poplar hanging wall splash guard, trimmed in blue and beige Shaker tape and three tape loop hangers, 16 1/2" l, 14 1/2" w; (ex. Pat Hatch collection).



213

CONVENIENCE STOOL

Pine, original walnut stained finish, breadboarded hinged lid, over three simulated drawers with white porcelain pulls, bottom drawer is nailed construction with hand planed bottom, tagged "Ex. Hazel Hayes to R. Steinert to R. Sokol coll."; Enfield, CT, 15" h, 16" w, 16" d, (ex. estate of Robert R. Sokol Sr. collection).



214

**TAPE WEAVING "NEEDLES",
CHILD'S WEAVING FRAME**

Three curved maple, chair seat tape pieces, with holes for tape, small, medium and large, tagged "Clarissa Stowe", 10" l; Shaker made wood and wire peg weaving loom, 4 1/2" sq, (ex. estate of Robert R. Sokol, Sr. collection).



215

BLANKET BOX

Pine, original red painted finish, with light horizontal black graining, single board lid and molded edge, two interior beveled cleats, till with sectioned drawer under, dovetailed case, Watervliet, NY, c. 1860, 16 1/4" h, 36" w, 17" d.



216

THREE WOODEN TOOLS

Long handled shovel, carved from one piece of maple, original natural finish, attached tag "Purchased 1979, Alma Bridge - Rocky, from Lymans R. Steinert.", 3' 10 1/2" l; Garden rake, original red painted finish, carved handle, 5' 4" l, through mortised into curved rake head with 16 carved teeth, 25 1/2" w; Rag mop handle, with threaded mop holder, through mortised and wood pegged, secured with square carved nuts, tagged "Hazel Hayes, rag mop handle", Enfield, CT, 4' 1" l; (ex. estate of Robert R. Sokol Sr. collection).



217

OVAL BOX

Maple and pine, original walnut brown stained finish, four fingers, c. 1830-1840, very good condition, 4 1/4" h, 11 1/8" l, 8" w.



218

RARE WINDOW VENT

Carved oak and screen, original varnish finish, three sliding rectangular blocks, with four 1" holes drilled to regulate air flow, missing a small stopper at one end, Enfield, CT, tagged "Window Vent from 1876, Brick Dwelling, Church family, Enfield, CT, To Richard Steinert from Sister Clarissa Stowe, To Sister S. Emily Copley.", 2 1/2" h, 3 1/4" w, (ex. estate of Robert R. Sokol Sr. collection).



219

RARE TIN DRYING PLATFORM

Probably used for drying fruits and vegetables, two rectangular platforms, with hot water attached funnel, with raised bottom section with rim to hold water, brass spigot, tagged "Drying Racks, hot water heated, H. Hayes to Steinert", "Church Family, Laundry Room", (ex. estate of Robert R. Sokol Sr. collection).



220

TWO FOLDING WORK TABLES

Pine, both tables were hinged and mounted for the wall, and used at one time in a kitchen from the pot marks and wear; Wooden swivel hinge and tapered foot, tagged "Church Family, Laundry Room.", sewing bird marks on bottom, 33" h, 36" l, 25" w; Large pine surface table, with raised gallery on three sides, two through mortised triangular wood braces, (missing the wood hinges), 43 1/2" l, 25 1/2" w; (ex. estate of Robert R. Sokol Sr. collection).



221

THREE RARE SHAKER OBJECTS

Carved clay pipe holder with pipe, maple, top is grooved for a match strike, c. 1840, 6 1/2" l; Sister's sewing shoe, leather and blue silk, "Fancy Goods", interior holds scissors and thimble, bottom holds needles, and heel is stuffed to hold pins, 5" l; Oval pine template, with circular hole for shaping oval box lids and bases, 9 1/2" l; (ex. Pat Hatch collection).



222

SHAKER TILTING SIDE CHAIR

Maple and birch, small flame finials with medial scribe marks, three graduated ladders, early 20th c. taped seat, gray and light rose color web, original tilters on back stiles, (note: appears to be "4" stamped onto top of right front stile, indicating room number), Canterbury, NH, c. 1840, good condition, 15" seat h, 41" overall h.



223

SISTER'S SEWING AND BROTHER'S WOODWORKING TOOLS

Large collection of Sister's sewing tools and Brother's woodworking tools from Enfield, CT, to include four oval boxes (sans lids) with threaded pegs, spools, darning eggs, etc., approximately 50 pieces, many of them tagged with families from Enfield, CT, and a walnut blind dovetailed "Millers Measure Box", 5" h, 9 1/2" l; Wood scribe from "North Family"; Gouge, carved maple, marked "CF"; Shaker carved pulleys with original handmade rope, tagged "from Seed House, Church Family"; Another walnut scribe, marked "Enfield Ct. Shakers", with threaded tightener; Swing handled measure, oak, (hole in one side), 6 1/2" h, 11" dia; (ex. estate of Robert R. Sokol Sr. collection).



224

FOUR "FANCY GOODS" HOT PLATE LINERS

Alternating walnut and maple strips, held with felt cloth backing, original varnish finish, oval and rectangular, Thomas Fisher Shaker Workshop, Enfield, CT, sold to the public at Shaker Shops, (ex. estate of Robert R. Sokol Sr. collection).



225

BUTTER CHURN

Cherry wood, natural finish and color, handled lid, paddle wheel interior with curved tin bottom, turned maple handle with cast iron spinner, brass side handles, 13 1/2" h, 12 1/2" x 13" lid.



226

ELDER'S ROCKING CHAIR

Maple, refinished, rare five slats tall, curvilinear arms, (shows repairs at back stiles), early splint seat, New Lebanon, NY, c. 1840, 16" seat h, 48" overall h.



227

PAIR OF SHAKER TIN CUPBOARDS

Pine, old refinish with traces of red, inset vertical panel doors through mortised and pegged, original Shaker pulls, and finely constructed door closures, (small repair to one door), painted interiors, built-in on one side, Watervliet, NY, c. 1840-1850, 7' 2" h, 24" w, 13" d.



228

SHAKER BARN OBJECTS

Bentwood saddle hanger, oak, original finish, 12" across; Horse comb for mane and tail, with turned and threaded handle, 5 1/4" l; Crank for wagon wheel nut, 11" l; Wall hanger for reins and bridle, through mortised; Wool carder, carved from one piece of maple, 5" teeth (32), North Family, Enfield, CT, 18" l; Six pine templates for axe handles, with holes for hanging on pegs, 34" l, and six walnut templates, 16" l; (ex. estate of Robert R. Sokol Sr. collection).



229

TWO SHELVES, AND A WORK BOX

Small, rounded corner pine shelf, with two canted brackets under, old white paint, tagged "Wash House, South Family, Enfield, CT Shakers", 8" h, 14" l; Hanging four-tier shelf, curved top and base, pine, original walnut stain, tagged "Church Family, Enfield, CT", 23" h, 14" w; Pine box, lift lid, dovetailed, original red painted finish, tagged "Church Family", 9 1/2" h, 24" w, 13" d; (ex. estate of Robert R. Sokol Sr. collection).



230

SHAKER KITCHEN OBJECTS

Cabbage slicer, tiger maple and oak sliding box for cabbage, two blades, 5 1/2" h, 33" l, 12" w; Scooped sorting tray (one piece, maple), curved back and slightly curved sides, 2 1/2" h, 27" l, 11" w; Carved wood scoop (one piece), with hole in handle for hanging, tagged "North Family", 12" l; Large carved scoop (one piece, maple), old split with Shaker wire repair, tagged "So. Shakers, Enfield, CT", 18" l; (ex. estate of Robert R. Sokol Sr. collection).



231

LARGE SHAKER EPHEMERA COLLECTION

Scrapbook postcards from early 1900's of Harvard Shaker buildings, Shaker Sister's outdoors, interior scenes, tintype of a Sister in a summer bonnet, large cabinet card of "Elder Elijah Myrick, Harvard Shakers, Rare postcard of Brother Arthur West and Sister's Alice Chavas and Lilian Chavas", Harvard, Mass.; Carte-de-visite of Brother Augustus Browner, Harvard, 1825 Christian Register Newspaper; (ex. Pat Hatch collection).



232

EPHEMERA PERTAINING TO ENFIELD, CT

Framed portrait of Brother Orcutt; Binder with 55 postcards pertaining to Shaker life in Enfield, CT, includes color lithographs, black and white lithographs, and photo postcards; Framed Shaker trade cards; Pamphlets and magazine articles; Matted fruit labels; Shaker Manifesto's and Almanacs; Book The Shaker and Their Homes; Many photo reproductions of Shakers and Village life; Legal proceedings report from Connecticut, 1870, with discussion of a land dispute; Ten photos of Enfield, CT buildings in a frame, 19" x 2"; (ex. estate of Robert R. Sokol Sr. collection).



233

THREE HANGERS

Pine, old varnish, labeled "Lucy S. Bowers", and tagged "Clothes Hanger belonging to Lucy Bowers. Left Enfield in 1917 to join Watervliet, NY society...", 15" l; Pine, old varnish, labeled "Kezia Lyman", 13" l; Oak, original patina, "Child's (or Doll) hanger, Children's Order, rare in this size, Kramer Collection", 7" l; (ex. estate of Robert R. Sokol Sr. collection).



234

TWO HANGING TOWEL RACKS

Oak, original dark stained finish, backboard with two carved end brackets, rolling pin slides in and out, 4 1/2" h, 20" l; Double pin towel rack with a wooden bracket, carved cherry, octagonal swinging arms, original old finish, tagged "North Family, Enfield Ct. Shakers"; (ex. estate of Robert R. Sokol Sr. collection).



235

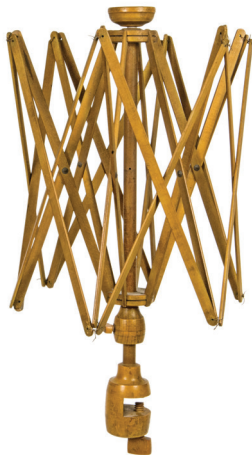
TEACHER'S LECTERN

Pine, original white painted finish, single board top with half round edges, carved, applied raised lip, finely dovetailed case, two rectangular holes cut into each end, probably used in Shaker School, c. 1850, 10 1/2" h, 17" w, 15" d.

236

FOUR STACKED OVAL BOXES

Pine and maple, original stained finish, three fingers, copper tacks, some interior rim damage, 5 7/8" l; Black painted finish, three fingers (right to left), 7 3/4" l; Original light red stain, three slender fingers, 8 3/4" l; Varnish finish, four fingers (right to left), some staining at bottom iron tacks, and a small break at left side, 10" l.



237

YARN SWIFT

Maple, poplar and pine, original chrome yellow stained finish, tabletop clamp with adjustable arms, original top cup, Hancock, MA, c. 1880, 25" h.

238

SISTER'S "FANCY GOODS"

Woven poplar and palm leaf, two oval table mats with fancy woven palm leaf Sister's cuffs, 6" l, 4 1/2" and 3 1/2" dia; box, trimmed in dark green, red and gray wallpapered interior, possibly Canterbury, NH, c. 1840-1850, light break Round top pincushion, brown velvet top, fancy woven poplar ribbons, 2" h, 6" dia; (ex. Pat Hatch collection).



239

TWO WORK BOXES

Pine, varnish finish, lift lid (hinged), large dovetails, black painted interior, tagged "Church Family, Trustee House", 5 1/2" h, 12" l, 8" d; Cherry, rectangular box, original dark stained finish, hinged lid carved to fit interior, fitted for a lock but was not used, brass escutcheon plate, finely dovetailed case, extended canted baseboard, tagged "North Family", 6 3/4" h, 13 1/2" l, 9" d; (ex. estate of Robert R. Sokol Sr. collection).

240

SHAKER REFERENCE LIBRARY

Includes books and auction catalogs, *Shakers Compendium*, 3rd Edition; *Summary of the Millennial Church*; *Shaker Art of the Craftsmanship*; *Shaker Baskets*; *Mount Lebanon Shaker Collection*; *A Guide to Shaker Manuscripts* (2), soft covers; *Shaker: Shakerism and Feminism*, soft cover; *Shaker Literature*, Vols I and II; *Shaker Design*; *Shaker Baskets and Poplarware*; *The Kentucky Shakers*; *Mother Ann Lee*; *Ann the Word: Life of Mother Ann Lee*; *Religion in Wood*; *Shaker Style*; *The Book of Shaker Furniture*; *Inner Light: The Shaker Legacy*; *The Shaker World, Art, Life, Belief*; *Shaker Tradition and Design*; *How to Build Shaker Furniture*; *The Shakers*; *Fruits of the Shaker Tree of Life*, soft cover; *A Shaker Reader*, soft cover; and three Willis Henry Auctions catalogs from 2005, 2006 and 2009; all are in fair condition, (Stranahan collection; ex. WHA 5/29/11).



Conditions of Sale

The property listed in this catalogue will be offered and sold subject to the following terms and conditions.

1. Willis R. Henry, herein known as “The Company”, has exercised reasonable care to catalogue and describe correctly the property to be sold, but does not warrant the correctness of description, genuineness, authenticity or condition of said property.

2. Unless otherwise announced by the auctioneer at the time of the sale, all bids are to be for a single article even though more than one article is included under a numbered item in the catalogue. If, however, the articles under any one numbered item are designated as a “Lot” then bids are to be for the lot irrespective of the number of articles described in such item.

3. The highest bidder accepted by the auctioneer shall be the buyer. In the event of any dispute between bidders, the auctioneer may, at his discretion, determine who is the successful bidder, and his decision shall be final; or the auctioneer may reoffer and resell the article in dispute.

4. Any bid which is not commensurate with the value of the article offered, or which is merely a nominal or fractional advance over the previous bid, may be rejected by the auctioneer, in his discretion, if in his judgment such bids would be likely to affect the sale injuriously.

5. The name and address of the buyer of each article or lot shall be given to the Company immediately following the sale thereof and payment of the whole purchase price, or such part thereof as the company may require, shall be immediately made by the purchaser thereof. If the foregoing condition or any other applicable condition herein is not complied with the sale, at the option of the Company, may be cancelled and the article, or lot, reoffered for sale.

6. Except as herein otherwise provided, title will pass to the highest bidder upon the fall of the auctioneer’s hammer and thereafter the property is at the purchaser’s sole risk and responsibility.

7. Articles sold and not paid for in full and not taken by 5 p.m. the day of the sale may be turned over by the Company to a carrier to be delivered to a storehouse for the account and risk of the purchaser, and at his cost. If the purchase price has not been paid in full, the Company may either cancel the sale, and any partial payment already made shall thereon be forfeited as liquidated damages, or it may resell the same, without notice to the buyer and for his account and risk, and hold him responsible for any deficiency.

8. The Company, subject to these Conditions of Sale and to such terms and conditions as it may prescribe, but without charge for its services, will undertake to make bids for responsible parties approved by it. Requests for such bidding must be given with such clearness as to leave no room for misunderstanding as to the amount to be bid and must state the catalogue number of the item and the name or title of the article to be bid on. If bids are to be made on several articles listed as one item in the catalogue, the request should state the amount to be bid on each article, unless the article contains the notation “Lot” in which case the request should state the amount to be bid “for the Lot”.

9. Conditions of Sale cannot be altered except in writing by the auctioneer at the time of the sale.

10. Not responsible for typographical errors or omissions.

11. TERMS: Cash, good check, MC/Visa. All items sold “as is”. A premium of 23% will be added to all property sold, to be paid by the buyer as part of the purchase price.

Note: All purchases subject to Massachusetts Sales Tax unless holder of exemption certificate.

WILLIS HENRY AUCTIONS ^{INC}

ABSENTEE BID FORM

Terms: Cash or Good Check, MC/Visa, 23% Buyer's Premium. All Absentee Bids are executed by a member of our staff as a free service to the bidder. The staff member will bid competitively up to the amount specified. The bid will start in the audience and the next logical raise will be executed by our staff member, until the bidding stops on or below the amount specified on the Absentee Form. If the bidding stops in the audience on the exact amount of the Absentee Bid the Company policy (**Plus One**) is for our staff member to bid the next raise so that the absentee bidder will not lose the Lot at the exact amount. If two or more absentee bids are received from different bidders on the same Lot, the bidding will start at the next logical raise above the second from the highest bid. If two or more identical absentee bids are received from different bidders, the bid first received by the Company will take precedent. OFFERINGS SUBJECT TO ERROR, ALL GOODS SOLD "AS IS", ALL SALES FINAL. All other Conditions of Sale in this catalog apply.

To be valid, this form should be filled out, **signed** and mailed to Willis Henry Auctions, Inc., 22 Main Street, Marshfield, MA 02050 **OR** faxed to 781-826-3520 **OR** emailed to wha@willishenry.com. **Important: Call 781-834-7774 to confirm receipt or email us at wha@willishenry.com.**

Name _____ Email _____

Street _____

City _____ State _____ Zip Code _____

Phone _____ Tax No _____

I wish to place the following bids for the auction being held on _____

Lot No.	Brief Description	Left Bid

Date _____ Signature _____

MC/Visa # _____ Exp _____ Security Code _____



Lot 115

Will & Karel Henry are grateful for being able to work with Hancock Shaker Village once again. Without Harlow Murray the auction would not be held at this location, so we have to thank him and Jennifer Trainer Thompson for making it all happen.

We also appreciate the extra work that our staff did to present this auction.

Kathy Grattan has kept everything going while Will was busy helping Karel reoperate from her broken hip.

John Grattan and Bob Gramarossa were troopers. John is a super Tech in all areas.

Will deserves credit for traveling long distances to pick up the Shaker pieces, while also being there for Karel when needed.

We are happy to be here once again! We hope you enjoy the auction.

WILLIS HENRY
AUCTIONS^{LLC}



Willis & Karel Henry
www.willishenryauctions.com
781-834-7774